



OEM Manufacturer & Global Supplier of
 Lockout Tagout & Safety Products

to meet
 OSHA'S Lockout Tagout Standard
 29 CFR, 1910.147&1910.269



www.lotoappliances.com

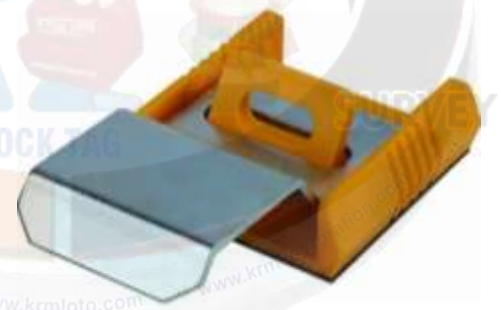
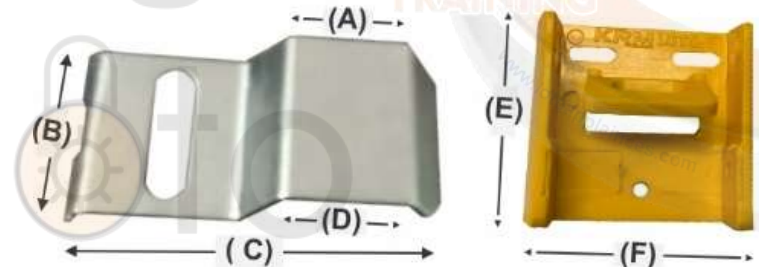


Regd. Office: 1H/31-A, N.I.T, Faridabad-121001 (Haryana) Postal Office: 615, Sector-15-A, Faridabad-121007-Haryana-NCR-INDIA

www.krmcorporation.com | www.lockouttagouts.com | www.krmloto.com | www.locktagindia.com | www.lotoappliances.com

KRM LOTO - MULTIPURPOSE INDUSTRIAL ELECTRICAL SAFETY LOCKOUT DEVICE – I

- **Material** – Made from ABS and mild steel plate.
- **Size of Yellow part** : 53x51 mm with provision of hole.
- **Size of Metal part** : 78.5mm x 40 mm , but cantilever part from yellow base : 40mm x 40mm x 23 mm (center height)
- Yellow Base Part can be fixed by double sided tape or screw.
- Different shape lockouts can be customized on quantity basis.
- Can put over button switch and lock hole for distribution cabinet's lockout device as shown in image to prevent accident.
- Always use Lockout Tagout while shutdown and maintenance work.



KRM-K-MIESLD-I

MODELS	A	B	C	D	E	F	WEIGHT
KRM-K-MIESLD-I	25mm	40mm	78.5mm	23mm	51mm	53mm	70gms