

GSTIN No.: 06AAMPW8746Q1Z6,  
PAN No.: AAVPW8746Q  
TIN No.: 0682132889,  
TAN no.: RTKKO3359G  
IEC: 0509006116

M: 00 91 9810 291 381, 8900 544 881



OEM Manufacturer & Global Supplier of  
Lockout Tagout & Safety Products

to meet  
OSHA'S Lockout Tagout Standard  
29 CFR, 1910.147&1910.269



www.lotoappliances.com



GSTIN No.: 06AAECK2831L1Z1  
PAN No.: AAECK2831L  
TIN No.: 06824000112  
CIN No.: U31903HR2011PTC042508  
IEC: AAECK2831L

Telefax: 00 91 129 4021 381, 413 1381 (D)

Regd. Office:1H/31-A, N.I.T, Faridabad-121001 (Haryana) Postal Office:615, Sector-15-A, Faridabad-121007-Haryana-NCR-INDIA

www.krmcorporation.com

www.lockouttagouts.com

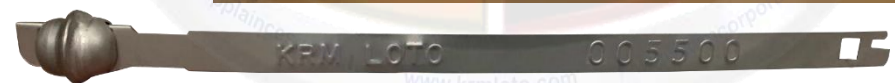
www.krmloto.com

www.locktagindia.com

www.lotoappliances.com

## KRM LOTO - METAL BALL SEAL

- **DESCRIPTION:**
  - Economical simple to install
  - Simple cutting tool required for removal
- **Material:**
  - Galvanized or Tin Plated Steel
- **Dimension:**
  - Ball size :16.5X16.5mm
  - Min. 198mmX8.5mmX0.1mm
- **Decoration/Printing:**
  - Embossed with consecutive numbers (6 digits) and customer name
  - Packaging against bulk requirement only, not regular basis
- **Packaging**
  - Standard Packaging: 100pcs/bundle - 2000/Carton
  - Carton Dimensions: 39x39x12cm
  - Carton Weight: Gross: 12.2 kg Net: 11.4 kg
- **Applications**
  - Multipurpose application as per requirement
  - Railroad Cars Truck Trailers Doors Hatches
  - Gates Inventory Control etc.



KRM-K-MBS