

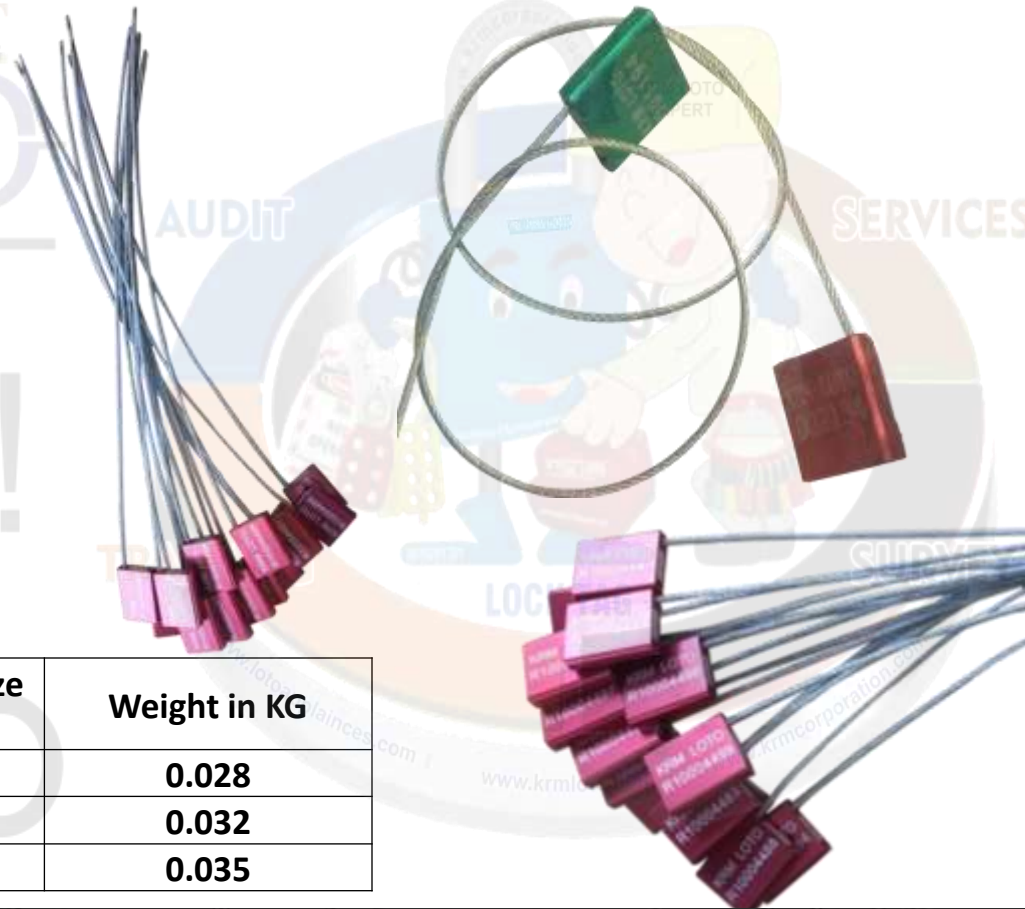


KRM LOTO - CAR LOCK SEAL SELF LOCKING (Cable Thickness Size – 2 mm)

Specifications:

- Body : Metal/Aluminum
- Size : 26.20mm x 22.30 mm app.
- Cable : Galvanized steel , 2 mm dia.
- Length : 300 mm
- Marking : individual number on each piece
- Color Anodized : red, yellow, black , blue , green, aluminium on volume basis.
- **Customization Colors:** can make on huge volume

NOTE - IMAGES FOR REFERENCE ONLY.



Mode No	Cable Length (mm)	Cable Thickness Size (mm)	Weight in KG
KRM-K-CLSSL-32	300	2	0.028
KRM-K-CLSSL-62	600	2	0.032
KRM-K-CLSSL-92	900	2	0.035