

GSTIN No.: 06AAPW8746Q1Z6,  
PAN No.: AAVPW8746Q  
TIN No.: 06821328889,  
TAN no.: RTKKO3359G

M: 00 91 9810 291 381, 8800 544 881



to compliance  
OSHA'S Lockout Tagout Standard  
29 CFR, 1910.147&1910.269



www.lotoappliances.com



GSTIN No.: 06AAECK2831L1Z1  
PAN No.: AAECK2831L  
TIN No.: 06824000112  
CIN No.: u31903HR2011PTC042508

Telefax: 00 91 129 4021 381, 413 1381 (D)

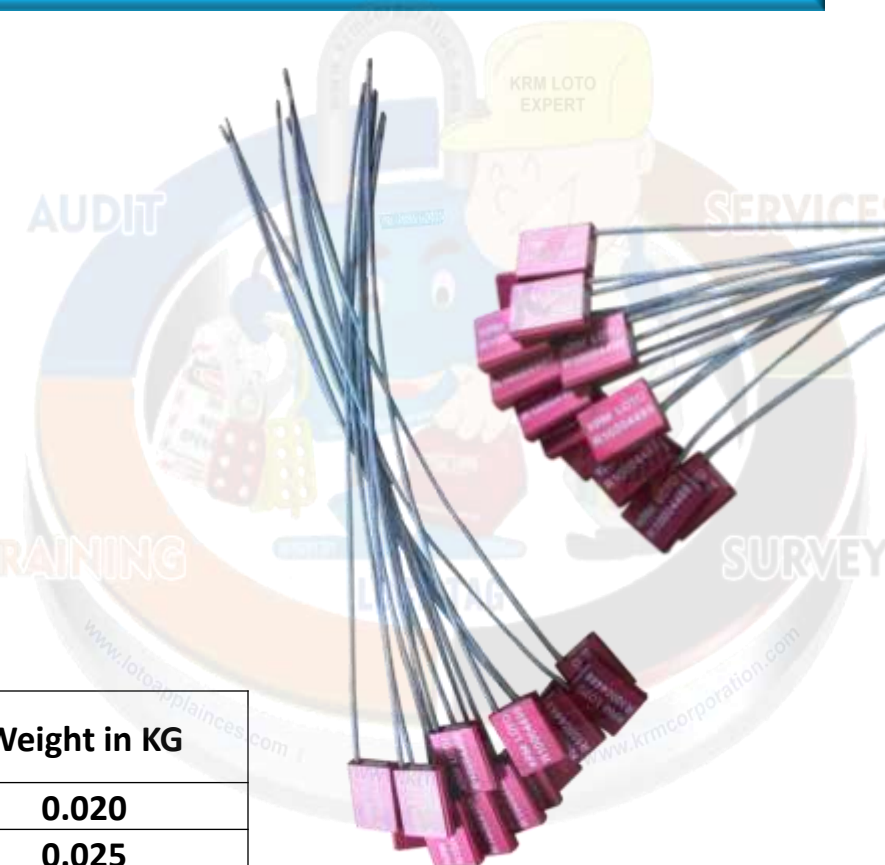
Regd. Office:1H/31-A, N.I.T, Faridabad-121001 (Haryana) Postal Office:615, Sector-15-A, Faridabad-121007-Haryana-NCR-INDIA

www.krmcorporation.com | www.lockouttagouts.com | www.krmloto.com | www.locktagindia.com | www.lotoappliances.com

**KRM LOTO - CAR LOCK SEAL SELF LOCKING (Cable Thickness Size – 1.5mm)**

**Specifications:**

- Body : Metal/Aluminum
- Size : 25mm x 22.40 mm app.
- Cable : Galvanized steel , 1.5 mm dia.
- Length : 300 mm
- Marking : individual number on each piece
- Color Anodized : red, yellow, black , blue , green, aluminium on volume basis
- **Customization Colors:** can make on huge volume



**NOTE - IMAGES FOR REFERENCE ONLY.**

Mode No	Cable Length (mm)	Cable Thickness Size (mm)	Weight in KG
KRM-K-CLSSL-315	300	1.5	0.020
KRM-K-CLSSL-615	600	1.5	0.025
KRM-K-CLSSL-915	900	1.5	0.030