

GSTIN No.: 06AAVPW8746Q1Z6,  
PAN No.: AAVPW8746Q  
TIN No.: 06821328889,  
TAN no.: RTKKO3359G  
IEC: 0509006116

M: 00 91 9810 291 381, 8800 544 881

Email: info@krmloto.com, info@krmcorporation.com, krmloto@gmail.com

Regd. Office: 1H/31-A, N.I.T, Faridabad-121001 (Haryana) Postal Office: 615, Sector-15-A, Faridabad-121007-Haryana-NCR-INDIA

www.krmcorporation.com | www.lockouttagouts.com | www.krmloto.com | www.locktagindia.com | www.lotoappliances.com



**Lock Tag!!**

to meet  
OSHA'S Lockout Tagout Standard  
29 CFR, 1910.147&1910.269



www.lotoappliances.com

**safe loto**



**KM Safetech Private Limited**  
QUALITY MANAGEMENT SYSTEM ISO 9001:2015

GSTIN No.: 06AAECK2831L1Z1  
PAN No.: AAECK2831L  
TIN No.: 06824000112  
CIN No.: U31903HR2011PTC042508  
IEC: AAECK2831L

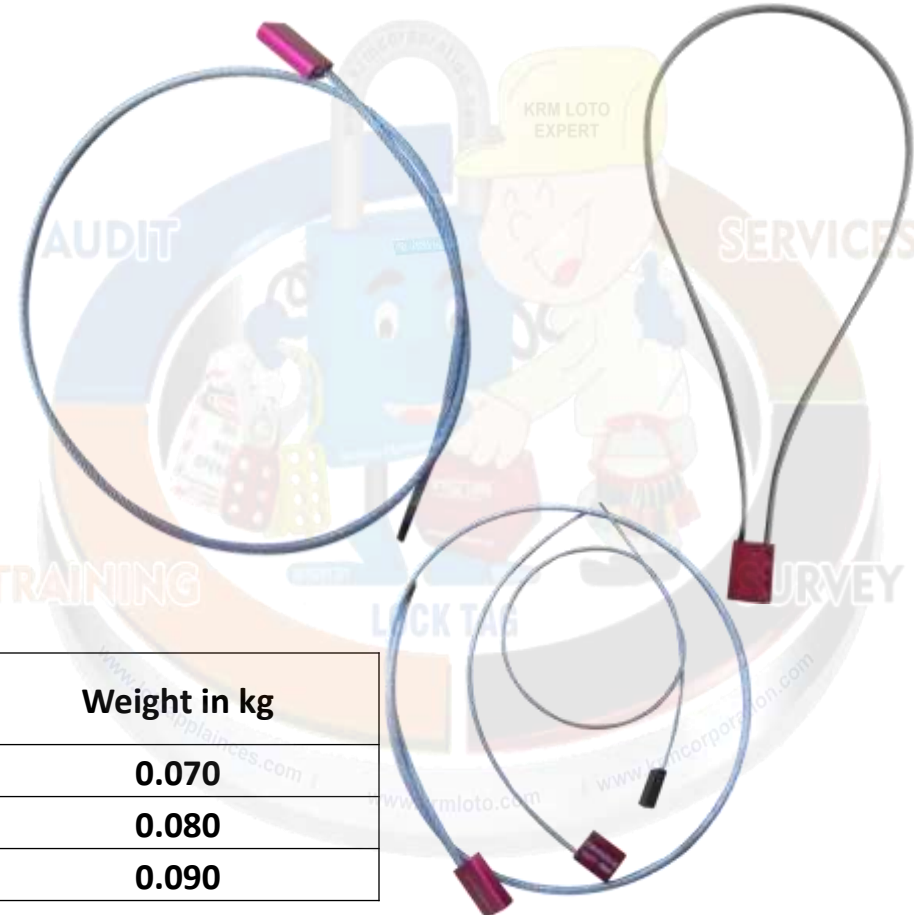
Telefax: 00 91 129 4021 381, 413 1381 (D)

**KRM LOTO - CAR LOCK SEAL SELF LOCKING (Cable Thickness Sizes - 3.5mm)**

**Specifications:**

- Body : Metal/Aluminum
- Size : 35mm x 28mm x app.
- Cable : Galvanized steel , 3.5 mm dia.
- Length : 300 mm
- Marking : individual number on each piece
- Color Anodized : red, yellow, black , blue , green, aluminum on volume basis.
- **Customization Colors:** can make on huge volume .

**NOTE - IMAGES FOR REFERENCE ONLY.**



Model No	Cable Length (mm)	Cable Thickness Size (mm)	Weight in kg
KRM-K-CLSSL-335	300	3.5	0.070
KRM-K-CLSSL-635	600	3.5	0.080
KRM-K-CLSSL-935	900	3.5	0.090