

GSTIN No.: 06AAMPW8746Q1Z6,  
PAN No.: AAVPW8746Q  
TIN No.: 06821328889,  
TAN no.: RTKKO3359G  
IEC: 0509006116

M: 00 91 9810 291 381, 8900 544 881



OEM Manufacturer & Global Supplier of  
Lockout Tagout & Safety Products

to meet  
OSHA'S Lockout Tagout Standard  
29 CFR, 1910.147&1910.269



www.lotoappliances.com



GSTIN No.: 06AAECK2831L1Z1  
PAN No.: AAECK2831L  
TIN No.: 06824000112  
CIN No.: U31903HR2011PTC042508  
IEC: AAECK2831L

Telefax: 00 91 129 4021 381, 413 1381 (D)

Regd. Office:1H/31-A, N.I.T, Faridabad-121001 (Haryana) Postal Office:615, Sector-15-A, Faridabad-121007-Haryana-NCR-INDIA

www.krmcorporation.com

www.lockouttagouts.com

www.krmloto.com

www.locktagindia.com

www.lotoappliances.com

## KRM LOTO - KEYLESS PADLOCK SEAL

### DESCRIPTION:

- Keyless Lock Seals are ideal seals for application on Containers, Wagons, Boxes, Cubicles, Panel Doors etc.

### Material:

- **Body** : ABS
- **Shackle** : Steel

### PRINTING:

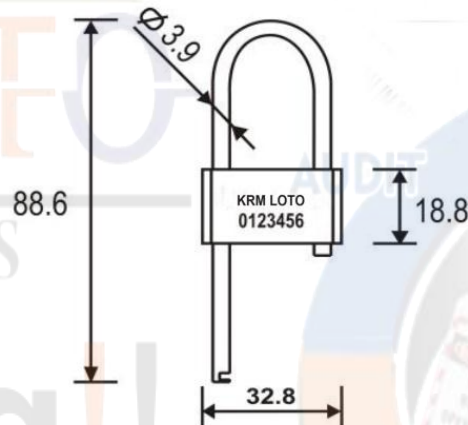
- **Logo** : Laser Marked
- **Serial Nos.** : Laser marked on Body and Shackle

### PACKAGING:

- 100 Locks in a Polybag

### USE:

- Pass shackle through object closure and pressing open end of shackle inside hole on body of Keyless Lock seals attains complete Locking. Cut using Heavy Duty Cutter to open.



KRM-K-KPS



OEM Manufacturer & Global Supplier of  
Lockout Tagout & Safety Products

to meet  
OSHA'S Lockout Tagout Standard  
29 CFR, 1910.147&1910.269



www.lotoappliances.com



**For more information Click below links**

[https://krmloto.com/download/KRM-LOTO-LOCKOUT-TAGOUT-CAR\\_SEAL.pdf](https://krmloto.com/download/KRM-LOTO-LOCKOUT-TAGOUT-CAR_SEAL.pdf)

<https://krmloto.com/download/ecatalogue/krmloto-e-catalogue-mini-booklet-lockout-tagout-safety-products-catalogue-2020.pdf>

<https://krmloto.com/lockout-tagout.html>

<https://www.krmcorporation.com>