

GSTIN No.: 06AAVPW8746Q1Z6,
PAN No.: AAVPW8746Q
TIN No.: 06821328889,
TAN no.: RTKKO3359G
IEC: 0509006116

M: 00 91 9810 291 381, 8800 544 881

Regd. Office: 1H/31-A, N.I.T, Faridabad-121001 (Haryana) Postal Office: 615, Sector-15-A, Faridabad-121007-Haryana-NCR-INDIA

www.krmcorporation.com

www.lockouttagouts.com

www.krmloto.com

www.locktagindia.com

www.lotoappliances.com



OEM Manufacturer & Global Supplier of
Lockout Tagout & Safety Products

to meet
OSHA'S Lockout Tagout Standard
29 CFR, 1910.147&1910.269

www.lotoappliances.com

Email: info@krmloto.com, info@krmcorporation.com, krmloto@gmail.com



GSTIN No.: 06AAECK2831L1Z1
PAN No.: AAECK2831L
TIN No.: 06824000112
CIN No.: U31903HR2011PTC042508
IEC: AAECK2831L

Telefax: 00 91 129 4021 381, 413 1381 (D)

PNEUMATIC LOCKOUT

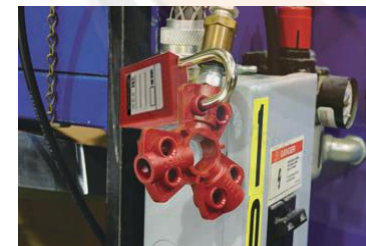
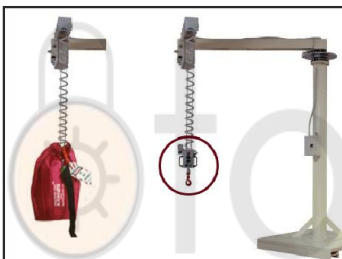
KRM Corporation Lockout Tagout



KRM Corporation Electrical Safety Products



KRM Corporation Other Products



KRM Corporation Parking & Road Safety Products



KRM Corporation Signage & Tapes



KRM Corporation TRAINING



**KRM LOTO – PNEUMATIC LOCKOUT DEVICES****Index Page No:-2**

SR.NO	KRM LOTO PART CODE	PRODUCT NAME	UNIT	WEIGHT (kg)	TECHNICAL PAGE NO.
1	KRM-K-PNSL	PNEUMATIC LOCKOUT MADE OF SS	NO	0.50	3-4
2	KRM-K-PEL-3	PNEUMATIC EASY - DISCONNECTED LOCKOUT DEVICE	NO	0.50	5-6
3	KRM-K-MPCL-PN-R	MINI PNEUMATIC LOCKOUT DEVICES RED	NO	0.50	7-8
4	KRM-K-MPCL-PN-Y	MINI PNEUMATIC LOCKOUT DEVICES YELLOW	NO	0.50	7-8
5	KRM-K-PLC-PN-2	LARGE PNEUMATIC LOCKOUT	NO	0.260	9-10
6	KRM-K-UDLPNL	UNIVERSAL DUAL LARGE PNEUMATIC LOCKOUT DEVICES	NO	0.375	11-12
7	KRM-K-UMDL-PN-Y13	UNIVERSAL MULTIDEVICE LOCKOUT CYLINDRICAL SHAPE (PNEUMATIC)	NO	0.113	13-14
8	KRM-K-UMDL-PN-R13	UNIVERSAL MULTIDEVICE LOCKOUT CYLINDRICAL SHAPE (PNEUMATIC)	NO	0.113	13-14
9	KRM-K-UMDL-PN-Y33	UNIVERSAL MULTIDEVICE LOCKOUT CYLINDRICAL SHAPE (PNEUMATIC)	NO	0.113	15-16
10	KRM-K-UMDL-PN-R33	UNIVERSAL MULTIDEVICE LOCKOUT CYLINDRICAL SHAPE (PNEUMATIC)	NO	0.113	15-16
11	KRM-K-AFLBD-1	ADJUSTABLE FLEXIBLE LOCKOUT BAG SMALL	NO	0.250	17-18
12	KRM-K-AFLBD-2	ADJUSTABLE FLEXIBLE LOCKOUT BAG BIG	NO	0.300	17-18
13	KRM-K-TPL23	KRM LOTO TRANSPARENT PNEUMATIC LOCKOUT	NO	0.30	19-20
14	KRM-K-TPL30	KRM LOTO TRANSPARENT PNEUMATIC LOCKOUT	NO	0.30	19-20
15	KRM-K-AFLYB-1	ADJUSTABLE FLEXIBLE LOCKOUT YELLOW BAG	No	0.350	21
16	KRM-K-AFLYB-2	ADJUSTABLE FLEXIBLE LOCKOUT YELLOW BAG	No	0.450	21

GSTIN No.: 06AACPW8746Q1Z6,
PAN No.: AACPW8746Q
TIN No.: 06821328889,
TAN no.: RTKKO3359G
IEC: 0509006116

M: 00 91 9810 291 381, 8800 544 881

Regd. Office: 1H/31-A, N.I.T, Faridabad-121001 (Haryana) Postal Office: 615, Sector-15-A, Faridabad-121007-Haryana-NCR-INDIA

www.krmcorporation.com

www.lockouttagouts.com

www.krmloto.com

www.locktagindia.com

www.lotoappliances.com



OEM Manufacturer & Global Supplier of
Lockout Tagout & Safety Products

to meet
OSHA'S Lockout Tagout Standard
29 CFR, 1910.147&1910.269



www.lotoappliances.com

Email: info@krmloto.com, info@krmcorporation.com, krmloto@gmail.com



GSTIN No.: 06AAECK2831L1Z1
PAN No.: AAECK2831L
TIN No.: 06824000112
CIN No.: U31903HR2011PTC042508
IEC: AAECK2831L

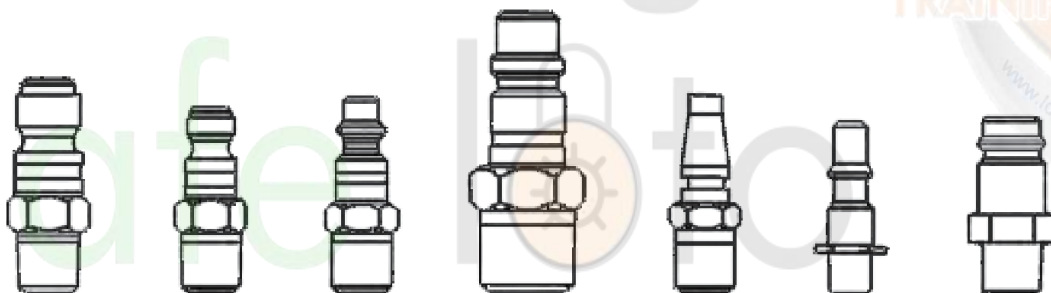
Telefax: 00 91 129 4021 381, 413 1381 (D)

PNEUMATIC LOCKOUT MADE OF SS

- KRM Pneumatic Lockout fits virtually all pneumatic fittings. Manufactured from stainless steel the pneumatic lockout is applied to the fitting and prevents it from being reconnected to the pressurized air sources that is anti-rust and corrosion resistance
- **Material** – Stainless Steel Holes for cord – Nine holes of different diameter, decreasing in diameter respectively
- **Dimension** – Height – 195mm Width – 35mm
- **Weight** – 50 gm
- **Color** – Stainless Steel Finish



KRM-K-PNSL



GSTIN No.: 06AAVPW8746Q1Z6,
PAN No.: AAVPW8746Q
TIN No.: 06821328889,
TAN no.: RTKKO3359G
IEC: 0509006116

M: 00 91 9810 291 381, 8800 544 881

Regd. Office: 1H/31-A, N.I.T, Faridabad-121001 (Haryana) Postal Office: 615, Sector-15-A, Faridabad-121007-Haryana-NCR-INDIA

www.krmcorporation.com

www.lockouttagouts.com

www.krmloto.com

www.locktagindia.com

www.lotoappliances.com



OEM Manufacturer & Global Supplier of
Lockout Tagout & Safety Products

to meet
OSHA'S Lockout Tagout Standard
29 CFR, 1910.147&1910.269



www.lotoappliances.com

Email: info@krmloto.com, info@krmcorporation.com, krmloto@gmail.com



GSTIN No.: 06AAECK2831L1Z1
PAN No.: AAECK2831L
TIN No.: 06824000112
CIN No.: U31903HR2011PTC042508
IEC: AAECK2831L

Telefax: 00 91 129 4021 381, 413 1381 (D)

LOCKOUT/TAGOUT



KRM-LOTO
SAFETY PRODUCTS
safe loto

PNEUMATIC LOCKOUT MADE OF SS

KRM LOTO
EXPERT

CE
Certified

- KRM Pneumatic Lockout fits virtually all pneumatic fittings. Manufactured from stainless steel the pneumatic lockout is applied to the fitting and prevents it from being reconnected to the pressurized air sources that is anti-rust and corrosion resistance
- **Material** – Stainless Steel Holes for cord – Nine holes of different diameter, decreasing in diameter respectively
- **Dimension** – Height –195mm Width – 35mm
- **Weight** – 50 gm
- **Color** – Stainless Steel Finish



KRM-K-PNSL



KRM CORPORATION

ISO QMS - 9001:2015, ISO EMS 14001:2015, ISO OHSMS 45001:2018
to meet OSHA'S Lockout Tagout Standard 29 CFR, 1910.147&1910.269

KRM Safetech Private Limited

QUALITY MANAGEMENT SYSTEM ISO QMS 9001:2015

info@krmcorporation.com, info@krmloto.com, krmloto@gmail.com, wadhwrajinder@gmail.com

M: 00 91 9810 291 381, 8800 544 881, T: 00 91 129 - 4021 381

Postal Add: 615, Sector-15A, Faridabad-121007
Regd. Office: 1H/31A, N.I.T. Faridabad-121001 Haryana - NCR (INDIA)

www.krmloto.com www.krmcorporation.com, www.safetyloto.com
www.lotoappliances.com, www.lockouttagouts.com

GSTIN No.: 06AAVPW8746Q1Z6,
PAN No.: AAVPW8746Q
TIN No.: 06821328889,
TAN no.: RTKKO3359G
IEC: 0509006116

M: 00 91 9810 291 381, 8800 544 881



OEM Manufacturer & Global Supplier of
Lockout Tagout & Safety Products

to meet
OSHA'S Lockout Tagout Standard
29 CFR, 1910.147&1910.269



www.lotoappliances.com



GSTIN No.: 06AAECK2831L1ZI
PAN No.: AAECK2831L
TIN No.: 06824000112
CIN No.: U31903HR2011PTC042508
IEC: AAECK2831L

Telefax: 00 91 129 4021 381, 413 1381 (D)

PNEUMATIC EASY - DISCONNECTED LOCKOUT DEVICE

- KRM Pneumatic Lockout is easily applied on the male fitting, isolating equipment from all compressed air sources, hole in center of device allows for permanent storage on an air hose and a loop on the side can be used to hang the hose and lockout device.
- **Material** – Polypropylene
- Lockout accepts padlocks with 1/4" or 9/32" shackle size.
- **Accommodation** – Device accommodate the majority of 1/4", 3/8" and 1/2" male fittings
- **Holes for chord** – Six holes of different diameter
- **Weight** – 50 gm
- **Color** – Red and as per the requirement



KRM-K-PEL-3

KRM CORPORATION

ISO QMS - 9001:2015, ISO EMS 14001:2015, ISO OHSMS 45001:2018
to meet OSHA's Lockout Tagout Standard 29 CFR, 1910.147&1910.269

GSTIN No.: 06AAPPW8746Q1Z6,
PAN No.: AAPPW8746Q
TIN No.: 06821328889,
TAN no.: RTKKO3359G
IEC: 0509006116

M: 00 91 9810 291 381, 8800 544 881

Regd. Office: 1H/31-A, N.I.T, Faridabad-121001 (Haryana) Postal Office: 615, Sector-15-A, Faridabad-121007-Haryana-NCR-INDIA

www.krmcorporation.com

www.lockouttagouts.com

www.krmloto.com

www.locktagindia.com

www.lotoappliances.com



OEM Manufacturer & Global Supplier of
Lockout Tagout & Safety Products

to meet
OSHA'S Lockout Tagout Standard
29 CFR, 1910.147&1910.269



www.lotoappliances.com

Email: info@krmloto.com, info@krmcorporation.com, krmloto@gmail.com

safe loto



KRM Safetech Private Limited
QUALITY MANAGEMENT SYSTEM ISO QMS 9001:2015

GSTIN No.: 06AAECK2831L1Z1
PAN No.: AAECK2831L
TIN No.: 06824000112
CIN No.: U31903HR2011PTC042508
IEC: AAECK2831L

Telefax: 00 91 129 4021 381, 413 1381 (D)

LOCKOUT/TAGOUT



KRM-LOTO
SAFETY PRODUCTS
safe loto

PNEUMATIC EASY - DISCONNECTED LOCKOUT DEVICE

CE
Certified



KRM-K-PEL-3

- KRM Pneumatic Lockout is easily applied on the male fitting, isolating equipment from all compressed air sources, hole in center of device allows for permanent storage on an air hose and a loop on the side can be used to hang the hose and lockout device.
- **Material** – Polypropylene
- Lockout accepts padlocks with 1/4" or 9/32" shackle size.
- **Accommodation** – Device accommodate the majority of 1/4", 3/8" and 1/2" male fittings
- **Holes for chord** – Six holes of different diameter
- **Weight** – 50 gm
- **Color** – Red and as per the requirement

KRM CORPORATION

ISO QMS - 9001:2015, ISO EMS 14001:2015, ISO OHSMS 45001:2018
to meet OSHA'S Lockout Tagout Standard 29 CFR, 1910.147&1910.269

KRM Safetech Private Limited

QUALITY MANAGEMENT SYSTEM ISO QMS 9001:2015

info@krmcorporation.com, info@krmloto.com, krmloto@gmail.com, wadhwaraajinder@gmail.com

M: 00 91 9810 291 381, 8800 544 881, T: 00 91 129 - 4021 381

Postal Add: 615, Sector-15A, Faridabad-121007
Regd. Office: 1H/31A, N.I.T. Faridabad-121001 Haryana - NCR (INDIA)

www.krmloto.com www.krmcorporation.com, www.safetyloto.com
www.lotoappliances.com, www.lockouttagouts.com

GSTIN No.: 06AACPW8746Q1Z6,
PAN No.: AACPW8746Q
TIN No.: 06821328889,
TAN No.: RTKKO3359G
IEC: 0509006116

M: 00 91 9810 291 381, 8800 544 881

Regd. Office: 1H/31-A, N.I.T, Faridabad-121001 (Haryana) Postal Office: 615, Sector-15-A, Faridabad-121007-Haryana-NCR-INDIA

www.krmcorporation.com

www.lockouttagouts.com

www.krmloto.com

www.locktagindia.com

www.lotoappliances.com



OEM Manufacturer & Global Supplier of
Lockout Tagout & Safety Products

to meet
OSHA'S Lockout Tagout Standard
29 CFR, 1910.147&1910.269



www.lotoappliances.com

Email: info@krmloto.com, info@krmcorporation.com, krmloto@gmail.com



GSTIN No.: 06AAECK2831L1Z1
PAN No.: AAECK2831L
TIN No.: 06824000112
CIN No.: U31903HR2011PTC042508
IEC: AAECK2831L

Telefax: 00 91 129 4021 381, 413 1381 (D)

MINI PNEUMATIC LOCKOUT DEVICES

- KRM Pneumatic Lockout is having two sections that are completely encloses. Pneumatic device of mini size to prevent reconnection.
- **Material** – ABS with printed label
- **Locking slots** – Three hole to place the Lock
- **Size** – length 90 mm, width 50mm, diameter 25 mm excluding hinge and locking arrangement. Diameter of power chord that is different for both side. One side 14 mm, another side 19 mm.
- **Weight** – 50 gm
- **Color** – Yellow, Red or any other color as per requirement.



KRM-K-MPCL-PN-R KRM-K-MPCL-PN-Y

MODELS	OUTER LENGTH	OUTER WIDTH	HOLE DIA	NUMBER OF HOLE	WEIGHT
KRM-K-MPCL-PN-R	458mm	242mm	09mm	04	250gm
KRM-K-MPCL-PN-Y	635mm	300mm	09mm	03	300gm

GSTIN No.: 06AACPW8746Q1Z6,
PAN No.: AACPW8746Q
TIN No.: 06821328889,
TAN no.: RTKKO3359G
IEC: 0509006116

M: 00 91 9810 291 381, 8800 544 881

Regd. Office: 1H/31-A, N.I.T, Faridabad-121001 (Haryana) Postal Office: 615, Sector-15-A, Faridabad-121007-Haryana-NCR-INDIA

www.krmcorporation.com

www.lockouttagouts.com

www.krmloto.com

www.locktagindia.com

www.lotoappliances.com



OEM Manufacturer & Global Supplier of
Lockout Tagout & Safety Products

to meet
OSHA'S Lockout Tagout Standard
29 CFR, 1910.147&1910.269



www.lotoappliances.com

Email: info@krmloto.com, info@krmcorporation.com, krmloto@gmail.com



GSTIN No.: 06AAECK2831L1Z1
PAN No.: AAECK2831L
TIN No.: 06824000112
CIN No.: U31903HR2011PTC042508
IEC: AAECK2831L

Telefax: 00 91 129 4021 381, 413 1381 (D)

LOCKOUT/TAGOUT



MINI PNEUMATIC LOCKOUT DEVICES

KRM LOTO
EXPERT

CE
Certified

KRM Pneumatic Lockout is having two sections that are completely encloses.
Pneumatic device of mini size to prevent reconnection.



KRM-K-MPCL-PN-R KRM-K-MPCL-PN-Y

- **Material** – ABS with printed label
- **Locking slots** – Three hole to place the Lock
- **Size** – length 90 mm, width 50mm, diameter 25 mm excluding hinge and locking arrangement. Diameter of pneumatic that is different for both side. One side 14 mm, another side 19 mm.
- **Weight** – 50 gms
- **Color** – Yellow, Red or any other color as per requirement.

MODELS	OUTER LENGTH	OUTER WIDTH	HOLE DIA	NUMBER OF HOLES	WEIGHT
KRM-K-MPCL-PN-R	90mm	50mm	09mm	03	50gm
KRM-K-MPCL-PN-Y	90mm	50mm	09mm	03	50gm

Postal Add: 615, Sector-15A, Faridabad-121007
Regd. Office: 1H/31A, N.I.T. Faridabad-121001 Haryana - NCR (INDIA)

www.krmloto.com www.krmcorporation.com, www.safetyloto.com
www.lotoappliances.com, www.lockouttagouts.com

GSTIN No.: 06AAPW8746Q1Z6,
PAN No.: AAVPW8746Q
TIN No.: 06821328889,
TAN no.: RTKKO3359G
IEC: 0509006116

M: 00 91 9810 291 381, 8800 544 881

Regd. Office: 1H/31-A, N.I.T, Faridabad-121001 (Haryana) Postal Office: 615, Sector-15-A, Faridabad-121007-Haryana-NCR-INDIA

www.krmcorporation.com

www.lockouttagouts.com

www.krmloto.com

www.locktagindia.com

www.lotoappliances.com



OEM Manufacturer & Global Supplier of
Lockout Tagout & Safety Products

to meet
OSHA'S Lockout Tagout Standard
29 CFR, 1910.147&1910.269



www.lotoappliances.com

Email: info@krmloto.com, info@krmcorporation.com, krmloto@gmail.com



GSTIN No.: 06AAECK2831L1Z1
PAN No.: AAECK2831L
TIN No.: 06824000112
CIN No.: U31903HR2011PTC042508
IEC: AAECK2831L

Telefax: 00 91 129 4021 381, 413 1381 (D)

LARGE PNEUMATIC LOCKOUT

- KRM Large Pneumatic Lockout isolates potentially hazardous energy without costly tool modifications or inconvenient in-line valves.
- **Material** – Poly Propylene.
- **Holes for Chord** – One hole of 25 mm diameter on both sides.
- **Locking Slots** – 4 holes to latch with lock for group isolation
- **Complete Outer Size** – Length - 194 mm and width 64 mm.
- **Inner Size** – Length 184 mm and width - 60 mm.
- **Weight** – 290 gm
- **Color** – Red or can make any color as per volume required



KRM-K-PLC-PN-2

MODEL	COMPLETE OUTER LENGTH/HEIGHT	COMPLETE OUTER WIDTH	INNER LENGTH	INNER WIDTH	NUMBER OF HOLE	HOLE DIA	WEIGHT
KRM-K-PLC-PN-2	LENTGH-194 HEIGHT-96mm	Center 94mm Bottom 64mm	LENTGH-186mm HEIGHT-88mm	Center-86mm Bottom 52mm	04hole	8.5mm	290gm

GSTIN No.: 06AAPW8746Q1Z6,
PAN No.: AAPW8746Q
TIN No.: 06821328889,
TAN no.: RTKK03359G
IEC: 0509006116

M: 00 91 9810 291 381, 8800 544 881

Regd. Office: 1H/31-A, N.I.T, Faridabad-121001 (Haryana) Postal Office: 615, Sector-15-A, Faridabad-121007-Haryana-NCR-INDIA

www.krmcorporation.com

www.lockouttagouts.com

www.krmloto.com

www.locktagindia.com

www.lotoappliances.com



OEM Manufacturer & Global Supplier of
Lockout Tagout & Safety Products

to meet
OSHA'S Lockout Tagout Standard
29 CFR, 1910.147&1910.269



www.lotoappliances.com

Email: info@krmloto.com, info@krmcorporation.com, krmloto@gmail.com



GSTIN No.: 06AAECK2831L1Z1
PAN No.: AAECK2831L
TIN No.: 06824000112
CIN No.: U31903HR2011PTC042508
IEC: AAECK2831L

Telefax: 00 91 129 4021 381, 413 1381 (D)

LOCKOUT/TAGOUT



KRM-LOTO
SAFETY PRODUCTS
safe loto

LARGE PNEUMATIC LOCKOUT

KRM LOTO
EXPERT

CE
Certified



KRM-K-PLC-PN-2

- KRM Large Pneumatic Lockout isolates potentially hazardous energy without costly tool modifications or inconvenient in-line valves.
- **Material** – Poly Propylene.
- **Holes for Chord** – One hole of 25 mm diameter on both sides.
- **Locking Slots** – 4 holes to latch with lock for group isolation
- **Complete Outer Size** – Length - 194 mm and width 64 mm.
- **Inner Size** – Length 184 mm and width - 60 mm.
- **Weight** – 290 gms
- **Color** – Red or can make any color as per volume required.



KRM-K-PLC-PN-2

MODELS	COMPLETE OUTER LENGTH/HEIGHT	COMPLETE OUTER WIDTH	INNER LENGHT	INNER WIDTH	NUMBER OF HOLES	HOLE DIA	WEIGHT
KRM-K-PLC-PN-2	LENGHT-194mm	CENTER 94mm	LENGTH-186mm	CENTER 86mm	04	8.5mm	290gm
	HEIGHT-96mm	BOTTOM 64mm	HEIGHT-88mm	BOTTOM 52mm			

GSTIN No.: 06AAPW8746Q1Z6,
PAN No.: AAVPW8746Q
TIN No.: 06821328889,
TAN no.: RTKKO3359G
IEC: 0509006116

M: 00 91 9810 291 381, 8800 544 881

Regd. Office: 1H/31-A, N.I.T, Faridabad-121001 (Haryana) Postal Office: 615, Sector-15-A, Faridabad-121007-Haryana-NCR-INDIA

www.krmcorporation.com

www.lockouttagouts.com

www.krmloto.com

www.locktagindia.com

www.lotoappliances.com



OEM Manufacturer & Global Supplier of
Lockout Tagout & Safety Products

to meet
OSHA'S Lockout Tagout Standard
29 CFR, 1910.147&1910.269



www.lotoappliances.com

Email: info@krmloto.com, info@krmcorporation.com, krmloto@gmail.com



GSTIN No.: 06AAECK2831L1Z1
PAN No.: AAECK2831L
TIN No.: 06824000112
CIN No.: U31903HR2011PTC042508
IEC: AAECK2831L

Telefax: 00 91 129 4021 381, 413 1381 (D)

UNIVERSAL DUAL LARGE PNEUMATIC LOCKOUT DEVICES

- KRM Large Pneumatic Lockout isolates potentially hazardous energy without costly tool modifications or inconvenient in-line valves.
- Material – Poly Propylene
- **Holes for chord** – One hole of different diameter on both sides
- **Isolate Large Plugs of Size** – diameter 118 mm, length – 250 mm
- **Locking slots** – 11 hole to latch with Lock for group isolation.
- **Complete Outer Size** – length 256 mm, width 124 mm
- **Inner Size** – length 250 mm, width 118 mm
- **Weight** – 380 gms
- **Color** – Yellow, Red Or any color make as per the quantity



KRM-K-UDLPNL

MODEL	OUTER LENGTH	OUTER WIDTH	HOLE DIA	NUMBER OF HOLE	WEIGHT
KRM-K-UDLPNL	256mm	124mm	10mm	11hole	380gm

GSTIN No.: 06AAPW8746Q1Z6,
PAN No.: AAVPW8746Q
TIN No.: 06821328889,
TAN no.: RTKKO3359G
IEC: 0509006116

M: 00 91 9810 291 381, 8800 544 881

Regd. Office: 1H/31-A, N.I.T, Faridabad-121001 (Haryana) Postal Office: 615, Sector-15-A, Faridabad-121007-Haryana-NCR-INDIA

www.krmcorporation.com | www.lockouttagouts.com | www.krmloto.com | www.locktagindia.com | www.lotoappliances.com



OEM Manufacturer & Global Supplier of
Lockout Tagout & Safety Products

to meet
OSHA'S Lockout Tagout Standard
29 CFR, 1910.147&1910.269



www.lotoappliances.com

Email: info@krmloto.com, info@krmcorporation.com, krmloto@gmail.com



GSTIN No.: 06AAECK2831L1Z1
PAN No.: AAECK2831L
TIN No.: 06824000112
CIN No.: U31903HR2011PTC042508
IEC: AAECK2831L

Telefax: 00 91 129 4021 381, 413 1381 (D)



UNIVERSAL DUAL LARGE PNEUMATIC LOCKOUT DEVICES

CE
Certified



KRM-K-UDLPNL

- KRM Large Pneumatic Lockout isolates potentially hazardous energy without costly tool modifications or inconvenient in-line valves.
- **Material** – Poly Propylene
- **Holes for chord** – One hole of different diameter on both sides
- **Isolate Large Plugs of Size** – diameter 118 mm, length – 250 mm
- **Locking slots** – 11 hole to latch with Lock for group isolation.
- **Complete Outer Size** – length 256 mm, width 124 mm
- **Inner Size** – length 250 mm, width 118 mm
- **Weight** – 380 gms
- **Color** – Yellow, Red Or any color make as per the quantity



KRM-K-UDLPNL

MODELS	OUTER LENGHT	OUTER WIDTH	HOLE DIA	NO. OF HOLE	WEIGHT
KRM-K-UDLPNL	256mm	124mm	10mm	11	380gm

GSTIN No.: 06AAPW8746Q1Z6,
PAN No.: AAVPW8746Q
TIN No.: 06821328889,
TAN no.: RTKKO3359G
IEC: 0509006116

M: 00 91 9810 291 381, 8800 544 881



OEM Manufacturer & Global Supplier of
Lockout Tagout & Safety Products

to meet
OSHA'S Lockout Tagout Standard
29 CFR, 1910.147&1910.269



www.locktagindia.com



GSTIN No.: 06AAECK2831L1Z1
PAN No.: AAECK2831L
TIN No.: 06824000112
CIN No.: U31903HR2011PTC042508
IEC: AAECK2831L

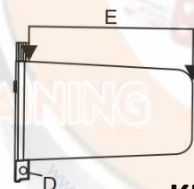
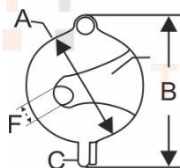
Telefax: 00 91 129 4021 381, 413 1381 (D)

Regd. Office: 1H/31-A, N.I.T, Faridabad-121001 (Haryana) Postal Office: 615, Sector-15-A, Faridabad-121007-Haryana-NCR-INDIA

www.krmcorporation.com | www.lockouttagouts.com | www.krmloto.com | www.locktagindia.com | www.lotoappliances.com

UNIVERSAL MULTIDEVICE LOCKOUT CYLINDRICAL SHAPE (PNEUMATIC)

- Material** – Poly Propylene with printed label
- KRM Universal Multi Device Lockout made by joining two parts that are designed to be used on high and low pressure gas cylinders and control the cylinder by locking the regulator attachment, also useful for plug or chord lockout
- Locking slots** – One hole to place the Lock
- Upper plates** – Two or Three slots are attached with round rivet
- Outer Size** – diameter 88 mm (3.45"), length 155 mm (6.10")
- Can lockout equipment of size – 3.4" width x 6" Length
- Color** – Yellow , Red Or any color make as per required quantity
- Weight** – 113 gm



KRM-K-UMDL-PN-Y13 KRM-K-UMDL-PN-R13

MODELS	(A)	(B)	(C)	(D)	(E)	(F)
KRM-K-UMDL-PN-Y13	88mm	120mm	14mm	9mm	155mm	13mm
KRM-K-UMDL-PN-R13	88mm	120mm	14mm	9mm	155mm	13mm

GSTIN No.: 06AAPPW8746Q1Z6,
PAN No.: AAPPW8746Q
TIN No.: 06821328889,
TAN no.: RTKKO3359G
IEC: 0509006116

M: 00 91 9810 291 381, 8800 544 881

Regd. Office: 1H/31-A, N.I.T, Faridabad-121001 (Haryana) Postal Office: 615, Sector-15-A, Faridabad-121007-Haryana-NCR-INDIA

www.krmcorporation.com

www.lockouttagouts.com

www.krmloto.com

www.locktagindia.com

www.lotoappliances.com



OEM Manufacturer & Global Supplier of
Lockout Tagout & Safety Products

to meet
OSHA'S Lockout Tagout Standard
29 CFR, 1910.147&1910.269



www.lotoappliances.com

Email: info@krmloto.com, info@krmcorporation.com, krmloto@gmail.com



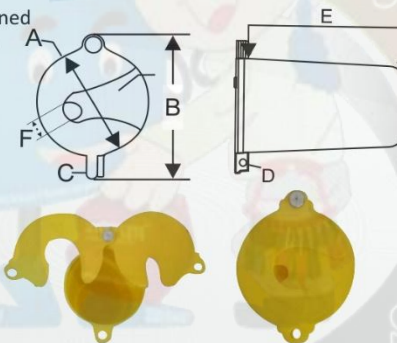
GSTIN No.: 06AAECK2831L1Z1
PAN No.: AAECK2831L
TIN No.: 06824000112
CIN No.: U31903HR2011PTC042508
IEC: AAECK2831L

Telefax: 00 91 129 4021 381, 413 1381 (D)

UNIVERSAL MULTIDEVICE LOCKOUT CYLINDRICAL SHAPE (PNEUMATIC)

CE
Certified

- Cylindrical Shape device is used to lock pneumatic device. It does not require any extra tool for fixing only latched by the padlocks directly.
- Material** – Poly Propylene with printed label
- KRM Universal Multi Device Lockout made by joining two parts that are designed to be used on high and low pressure gas cylinders and control the cylinder by locking the regulator attachment, also useful for plug or chord lockout
- Locking slots** – One hole to place the Lock
- Upper plates** – Two or Three slots are attached with round rivet
- Outer Size** – diameter 88 mm (3.45"), length 155 mm (6.10")
- Can lockout equipment of size – 3.4" width x 6" Length
- Weight** – 113 gms
- Color** – Yellow, Red Or any color make as per required quantity



MODELS	A	B	C	D	E	F
KRM-K-UMDL-PN-Y13	88mm	120mm	14mm	09mm	155mm	13mm
KRM-K-UMDL-PN-R13	88mm	120mm	14mm	09mm	155mm	13mm



KRM-LOTO
SAFETY PRODUCTS
safe loto



KRM-K-UMDL-PN-Y13 KRM-K-UMDL-PN-R13

KRM CORPORATION

ISO QMS - 9001:2015, ISO EMS 14001:2015, ISO OHSMS 45001:2018
to meet OSHA's Lockout Tagout Standard 29 CFR, 1910.147&1910.269

KRM Safetech Private Limited

QUALITY MANAGEMENT SYSTEM ISO QMS 9001:2015

info@krmcorporation.com, info@krmloto.com, krmloto@gmail.com, wadhwrajinder@gmail.com

M: 00 91 9810 291 381, 8800 544 881, T: 00 91 129 - 4021 381

Postal Add: 615, Sector-15A, Faridabad-121007
Regd. Office: 1H/31A, N.I.T. Faridabad-121001 Haryana - NCR (INDIA)

www.krmloto.com www.krmcorporation.com, www.safetyloto.com
www.lotoappliances.com, www.lockouttagouts.com

GSTIN No.: 06AACPW8746Q1Z6,
PAN No.: AACPW8746Q
TIN No.: 06821328889,
TAN no.: RTKKO3359G
IEC: 0509006116

M: 00 91 9810 291 381, 8800 544 881

Regd. Office: 1H/31-A, N.I.T, Faridabad-121001 (Haryana) Postal Office: 615, Sector-15-A, Faridabad-121007-Haryana-NCR-INDIA

www.krmcorporation.com | www.lockouttagouts.com | www.krmloto.com | www.locktagindia.com | www.lotoappliances.com



OEM Manufacturer & Global Supplier of
Lockout Tagout & Safety Products

to meet
OSHA'S Lockout Tagout Standard
29 CFR, 1910.147&1910.269



www.lotoappliances.com

Email: info@krmloto.com, info@krmcorporation.com, krmloto@gmail.com

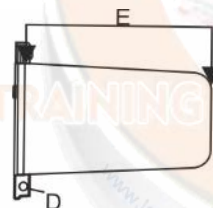
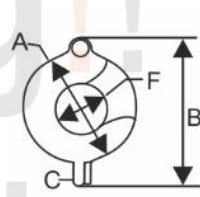


GSTIN No.: 06AAECK2831L1Z1
PAN No.: AAECK2831L
TIN No.: 06824000112
CIN No.: U31903HR2011PTC042508
IEC: AAECK2831L

Telefax: 00 91 129 4021 381, 413 1381 (D)

UNIVERSAL MULTIDEVICE LOCKOUT CYLINDRICAL SHAPE (PNEUMATIC)

- **Material** – Poly Propylene with printed label
- KRM Universal Multi Device Lockout made by joining two parts that are designed to be used on high and low pressure gas cylinders and control the cylinder by locking the regulator attachment, also useful for plug or chord lockout
- **Locking slots** – One hole to place the Lock
- **Upper plates** – Two or Three slots are attached with round rivet
- **Outer Size** – diameter 88 mm (3.45"), length 155 mm (6.10")
- Can lockout equipment of size – 3.4" width x 6" Length
- **Color** – Yellow , Red Or any color make as per required quantity
- **Weight** – 113 gm



KRM-K-UMDL-PN-Y33 KRM-K-UMDL-PN-R33

MODELS	(A)	(B)	(C)	(D)	(E)	(F)
KRM-K-UMDL-PN-Y33	88mm	120mm	14mm	9mm	155mm	33mm
KRM-K-UMDL-PN-R33	88mm	120mm	14mm	9mm	155mm	33mm

GSTIN No.: 06AAPW8746Q1Z6,
PAN No.: AAVPW8746Q
TIN No.: 06821328889,
TAN no.: RTKKO3359G
IEC: 0509006116

M: 00 91 9810 291 381, 8800 544 881

Regd. Office: 1H/31-A, N.I.T, Faridabad-121001 (Haryana) Postal Office: 615, Sector-15-A, Faridabad-121007-Haryana-NCR-INDIA

www.krmcorporation.com

www.lockouttagouts.com

www.krmloto.com

www.locktagindia.com

www.lotoappliances.com



OEM Manufacturer & Global Supplier of
Lockout Tagout & Safety Products

to meet
OSHA'S Lockout Tagout Standard
29 CFR, 1910.147&1910.269



www.lotoappliances.com

Email: info@krmloto.com, info@krmcorporation.com, krmloto@gmail.com



GSTIN No.: 06AAECK2831L1Z1
PAN No.: AAECK2831L
TIN No.: 06824000112
CIN No.: U31903HR2011PTC042508
IEC: AAECK2831L

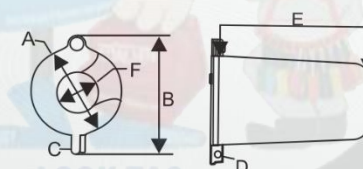
Telefax: 00 91 129 4021 381, 413 1381 (D)

LOCKOUT/TAGOUT

**UNIVERSAL MULTIDEVICE LOCKOUT CYLINDRICAL SHAPE (PNEUMATIC)**

CE
Certified

- Cylindrical Shape device is used to lock pneumatic device. It does not require any extra tool for fixing only latched by the padlocks directly.
- **Material** – Poly Propylene with printed label
- KRM Universal Multi Device Lockout made by joining two parts that are designed to be used on high and low pressure gas cylinders and control the cylinder by locking the regulator attachment, also useful for plug or chord lockout
- **Locking slots** – One hole to place the Lock
- **Upper plates** – Two or Three slots are attached with round rivet
- **Outer Size** – diameter 88 mm (3.45"), length 155 mm (6.10")
- Can lockout equipment of size – 3.4" width x 6" Length
- **Weight** – 113 gms
- **Color** – Yellow, Red Or any color make as per required quantity



KRM-K-UMDL-PN-Y33 KRM-K-UMDL-PN-R33

MODELS	A	B	C	D	E	F
KRM-K-UMDL-PN-Y33	88mm	36mm	14mm	09mm	163mm	33mm
KRM-K-UMDL-PN-R33	88mm	36mm	14mm	09mm	163mm	33mm

GSTIN No.: 06AACPW8746Q1Z6,
PAN No.: AACPW8746Q
TIN No.: 06821328889,
TAN No.: RTKKO3359G
IEC: 0509006116

M: 00 91 9810 291 381, 8800 544 881



OEM Manufacturer & Global Supplier of
Lockout Tagout & Safety Products

to meet
OSHA'S Lockout Tagout Standard
29 CFR, 1910.147&1910.269



www.lotoappliances.com



GSTIN No.: 06AAECK2831L1Z1
PAN No.: AAECK2831L
TIN No.: 06824000112
CIN No.: U31903HR2011PTC042508
IEC: AAECK2831L

Telefax: 00 91 129 4021 381, 413 1381 (D)

Regd. Office: 1H/31-A, N.I.T, Faridabad-121001 (Haryana) Postal Office: 615, Sector-15-A, Faridabad-121007-Haryana-NCR-INDIA

www.krmcorporation.com

www.lockouttagouts.com

www.krmloto.com

www.locktagindia.com

www.lotoappliances.com

ADJUSTABLE FLEXIBLE LOCKOUT BAG

- KRM Adjustable Lockout Bag used for plug, connector, Hoist control button, liver, cylinder, pneumatic etc. which is basically a hollow tube, PVC can be insert and can make a tight lockout.
- **Material** – Thick fabric Bag with insert PVC / FOAM strip.
- **Slots** – 4 or 8 holes to put the padlocks. as per stock Availability.
- **Color** – Red
- **Hole Dia** – 9 mm
- **KRM-AFLBD-1** – 458x242mm
- **KRM-AFLBD-2** – 635x300mm
- **Weight** – 250gm & 300gm



KRM-K-AFLBD-1

KRM-K-AFLBD-2

MODELS	OUTER LENGTH	OUTER WIDTH	HOLE DIA	NUMBER OF HOLE	WEIGHT
KRM-K-AFLBD-1	458mm	242mm	09mm	04	250gm
KRM-K-AFLBD-2	635mm	300mm	09mm	03	300gm

GSTIN No.: 06AAPW8746Q1Z6,
PAN No.: AAPW8746Q
TIN No.: 06821328889,
TAN no.: RTKKO3359G
IEC: 0509006116

M: 00 91 9810 291 381, 8800 544 881

Regd. Office: 1H/31-A, N.I.T, Faridabad-121001 (Haryana) Postal Office: 615, Sector-15-A, Faridabad-121007-Haryana-NCR-INDIA

www.krmcorporation.com

www.lockouttagouts.com

www.krmloto.com

www.locktagindia.com

www.lotoappliances.com



OEM Manufacturer & Global Supplier of
Lockout Tagout & Safety Products

to meet
OSHA'S Lockout Tagout Standard
29 CFR, 1910.147&1910.269



www.lotoappliances.com

Email: info@krmloto.com, info@krmcorporation.com, krmloto@gmail.com



GSTIN No.: 06AAECK2831L1Z1
PAN No.: AAECK2831L
TIN No.: 06824000112
CIN No.: U31903HR2011PTC042508
IEC: AAECK2831L

Telefax: 00 91 129 4021 381, 413 1381 (D)

ADJUSTABLE FLEXIBLE LOCKOUT BAG

CE
Certified



- KRM Adjustable Lockout Bag used for plug, connector, Hoist control button, liver, cylinder, pneumatic etc. which is basically a hollow tube, PVC can be insert and can make a tight lockout.
- **Material** –Thick fabric Bag with insert PVC / FOAM strip.
- **Slots** – 4 or 8 holes to put the padlocks. as per stock Availability.
- **Color** – Red
- **Hole Dia** – 9 mm
- **KRM-AFLBD-1** – 458x242mm
- **KRM-AFLBD-2** – 635x300mm
- **Weight** – 250gm & 300gm



KRM-K-AFLBD-1



KRM-K-AFLBD-2

MODELS	OUTER LENGTH	OUTER WIDTH	HOLE DIA	NUMBER OF HOLE	WEIGHT
KRM-K-AFLBD-1	458mm	242mm	9mm	04	250gm
KRM-K-AFLBD-2	635mm	300mm	9mm	04	300gm

GSTIN No.: 06AAPW8746Q1Z6,
PAN No.: AAVPW8746Q
TIN No.: 06821328889,
TAN no.: RTKKO3359G
IEC: 0509006116

M: 00 91 9810 291 381, 8800 544 881



OEM Manufacturer & Global Supplier of
Lockout Tagout & Safety Products

to meet
OSHA'S Lockout Tagout Standard
29 CFR, 1910.147&1910.269



www.locktagindia.com



GSTIN No.: 06AAECK2831L1Z1
PAN No.: AAECK2831L
TIN No.: 06824000112
CIN No.: U31903HR2011PTC042508
IEC: AAECK2831L

Telefax: 00 91 129 4021 381, 413 1381 (D)

Regd. Office: 1H/31-A, N.I.T, Faridabad-121001 (Haryana) Postal Office: 615, Sector-15-A, Faridabad-121007-Haryana-NCR-INDIA

www.krmcorporation.com | www.lockouttagouts.com | www.krmloto.com | www.locktagindia.com | www.lotoappliances.com

KRM LOTO TRANSPARENT PNEUMATIC LOCKOUT

- **Material** – Strong Polycarbonate body
- **Color** - Transparent Glass.
- **Outer height** – In closed position 55 mm ($\pm 10\%$)
- **Internal size** – Upper part Height 38 mm X Diameter 44 mm, lower base part Height 15 mm X Diameter 45.5 mm
- **For KRM-K-TPL23**-Cut out diameter size of lower base part 23.5 mm. It can also be extended up to 30 mm dia.
- **For KRM-K-TPL30**-Cut out diameter size of lower base part 30 mm.
- With holes for locking purpose 7.5 mm.
- **Weight** - 30 gm.



KRM-K-TPL23



KRM-K-TPL30



MODELS	OVERALL HEIGHT	INNER SIZE OF UPPER PARTS	HOLE SIZE	WEIGHT
KRM-K-TPL23	55mm	38x44mm	7.5mm	30gms
KRM-K-TPL30	55mm	38x44mm	7.5mm	30gms

GSTIN No.: 06AAPPW8746Q1Z6,
PAN No.: AAPPW8746Q
TIN No.: 06821328889,
TAN no.: RTKKO3359G
IEC: 0509006116

M: 00 91 9810 291 381, 8800 544 881

Regd. Office: 1H/31-A, N.I.T, Faridabad-121001 (Haryana) Postal Office: 615, Sector-15-A, Faridabad-121007-Haryana-NCR-INDIA

www.krmcorporation.com

www.lockouttagouts.com

www.krmloto.com

www.locktagindia.com

www.lotoappliances.com



OEM Manufacturer & Global Supplier of
Lockout Tagout & Safety Products

to meet
OSHA'S Lockout Tagout Standard
29 CFR, 1910.147&1910.269



www.lotoappliances.com

Email: info@krmloto.com, info@krmcorporation.com, krmloto@gmail.com



GSTIN No.: 06AAECK2831L1Z1
PAN No.: AAECK2831L
TIN No.: 06824000112
CIN No.: U31903HR2011PTC042508
IEC: AAECK2831L

Telefax: 00 91 129 4021 381, 413 1381 (D)

LOCKOUT/TAGOUT



KRM-LOTO
SAFETY PRODUCTS

safe loto



KRM-K-TPL23

KRM-K-TPL30

KRM LOTO TRANSPARENT PNEUMATIC LOCKOUT

CE
Certified

- **Material** – Strong Polycarbonate body
- **Color** – Transparent Glass.
- **Outer height** – In closed position 55 mm ($\pm 10\%$)
- **Internal size** – Upper part Height 38 mm X Diameter 44 mm, lower base part Height 15 mm X Diameter 45.5 mm
- For KRM-K-TPL23-Cut out diameter size of lower base part 23.5 mm. It can also be extended up to 30 mm dia.
- For KRM-K-TPL30-Cut out diameter size of lower base part 30 mm.
- With holes for locking purpose 7.5 mm.
- **Weight** – 30 gms.

MODELS	OVERALL HEIGHT	INNER SIZE OF UPPER PARTS	HOLE SIZE	WEIGHT
KRM-K-TPL23	55mm	38x44mm	7.5mm	30gm
KRM-K-TPL30	55mm	38x44mm	7.5mm	30gm

KRM CORPORATION

ISO QMS - 9001:2015, ISO EMS 14001:2015, ISO OHSMS 45001:2018
to meet OSHA's Lockout Tagout Standard 29 CFR, 1910.147&1910.269

KRM Safetech Private Limited

QUALITY MANAGEMENT SYSTEM ISO QMS 9001:2015

info@krmcorporation.com, info@krmloto.com, krmloto@gmail.com, wadhwaraajinder@gmail.com

M: 00 91 9810 291 381, 8800 544 881, T: 00 91 129 - 4021 381

Postal Add: 615, Sector-15A, Faridabad-121007
Regd. Office: 1H/31A, N.I.T. Faridabad-121001 Haryana - NCR (INDIA)

www.krmloto.com www.krmcorporation.com, www.safetyloto.com
www.lotoappliances.com, www.lockouttagouts.com

GSTIN No.: 06AAPW8746Q1Z6,
PAN No.: AAVPW8746Q
TIN No.: 06821328889,
TAN no.: RTKKO3359G
IEC: 0509006116

M: 00 91 9810 291 381, 8800 544 881



to meet
OSHA'S Lockout Tagout Standard
29 CFR, 1910.147&1910.269



www.lotoappliances.com



GSTIN No.: 06AAECK2831L1ZI
PAN No.: AAECK2831L
TIN No.: 06824000112
CIN No.: U31903HR2011PTC042508
IEC: AAECK2831L

Telefax: 00 91 129 4021 381, 413 1381 (D)

www.krmcorporation.com | www.lockouttagouts.com | www.krmloto.com | www.locktagindia.com | www.lotoappliances.com

ADJUSTABLE FLEXIBLE LOCKOUT YELLOW BAG

- KRM Adjustable Flexible Lockout Bag used for plug, connector, Hoist control button, liver, cylinder, pneumatic etc. which is basically a hollow bag, PVC Pipe can be inserted as per requirement
- **Material** – Thick Vinyl bag with metal wire closing chord with ABS device
- **Slots** – Max 6 holes to put the padlocks
- **Color** – yellow, red as stock
- **Hole Dia** – 9 mm
- **KRM-AFLYB-1** – 458x242mm
- **KRM-AFLYB-2** – 635x300mm

KRM-K-AFLYB-1



KRM-K-AFLYB-2



MODELS	OUTER LENGTH	OUTER WIDTH	HOLE DIA	NUMBER OF HOLE	WEIGHT
KRM-K-AFLYB-1	458 mm	242 mm	09mm	06	350gm
KRM-K-AFLYB-2	635 mm	300 mm	09mm	06	450gm