

KRM CORPORATION

OHSA 18001-2007 & BS EN ISO 9001 : 2008 CERTIFIED COMPANY
to meet OSHA'S Lockout Tagout Standard 29 CFR, 1910.147&1910.269

GSTIN No.: 06AAVPW8746Q1Z6,
PAN No.: AAVPW8746Q
TIN No.: 06821328889,
TAN no.: RTKKO3359G

M: 00 91 9810 291 381, 8800 544 881

Regd. Office: 1H/31-A, N.I.T, Faridabad-121001 (Haryana) Postal Office: 615, Sector-15-A, Faridabad-121007-Haryana-NCR-INDIA

www.krmcorporation.com | www.lockouttagouts.com | www.safetyloto.com | www.lockoutmaster.com | www.lotoappliances.com



to compliance
OSHA'S Lockout Tagout Standard
29 CFR, 1910.147&1910.269

Email: info@krmcorporation.com, krm@krmcorporation.com, wadhwarajinder@gmail.com



www.lotoappliances.com

**KRM Safetech Private Limited**

GSTIN No.: 06AAECK2831L1ZI
PAN No.: AAECK2831L
TIN No.: 06824000112
CIN No.: u31903HR2011PTC042508

Telefax: 00 91 129 4021 381, 413 1381 (D)

KRM LOTO - SAFETY POSTER

Made of multimedia pre adhesive vinyl pasted on thick ACP sheet (3 mm).

With transparent UV lamination

Eco friendly.

Size - 4ft x 3ft

Indoor and Outdoor application.

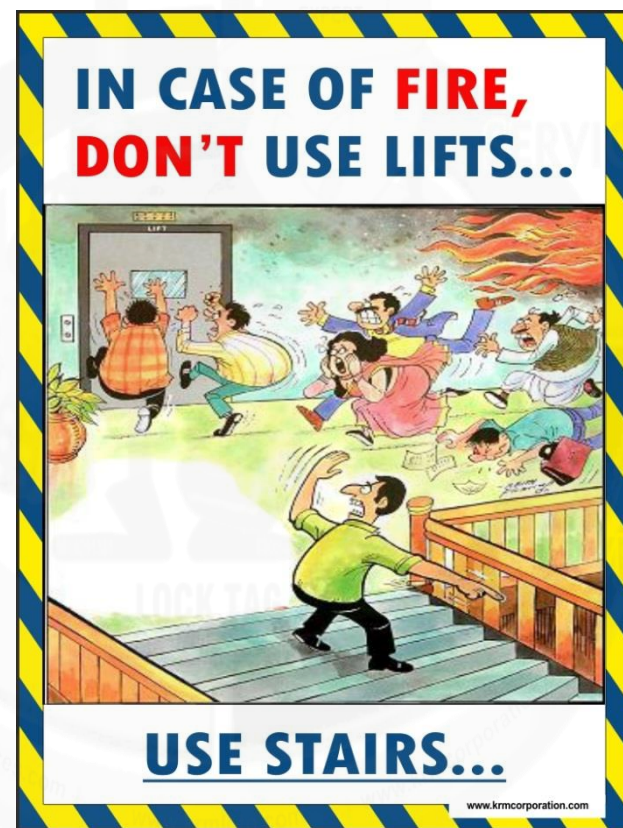
If required can make holes on the corner of the sheet to hang it.

Customization can be done for size and matter on the quantity ordered.

Weight - 5.5 kg.

NOTE:- Volumetric Weight will be charged for this piece.

Prices available are for a single piece.



www.krmcorporation.com

KRM CORPORATION

OHSA 18001-2007 & BS EN ISO 9001 : 2008 CERTIFIED COMPANY
to meet OSHA's Lockout Tagout Standard 29 CFR, 1910.147&1910.269

GSTIN No.: 06AAVPW8746Q1Z6,
PAN No.: AAVPW8746Q
TIN No.: 06821328889,
TAN no.: RTKKO3359G

M: 00 91 9810 291 381, 8800 544 881

Regd. Office: 1H/31-A, N.I.T, Faridabad-121001 (Haryana) Postal Office: 615, Sector-15-A, Faridabad-121007-Haryana-NCR-INDIA

www.krmcorporation.com | www.lockouttagouts.com | www.safetyloto.com | www.lockoutmaster.com | www.lotoappliances.com



to compliance
OSHA's Lockout Tagout Standard
29 CFR, 1910.147&1910.269

Email: info@krmcorporation.com, krm@krmcorporation.com, wadhwarajinder@gmail.com

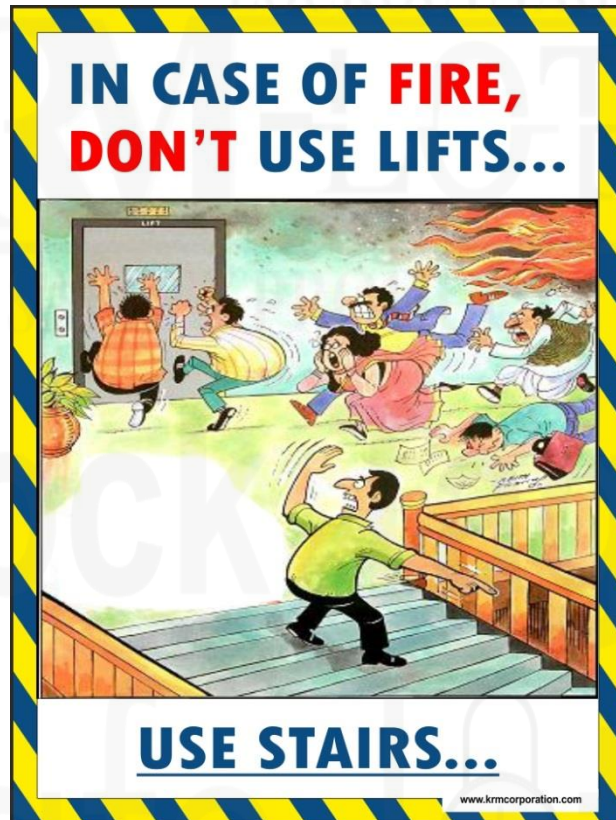


www.lotoappliances.com

**KRM Safetech Private Limited**

GSTIN No.: 06AAECK2831L1ZI
PAN No.: AAECK2831L
TIN No.: 06824000112
CIN No.: u31903HR2011PTC042508

Telefax: 00 91 129 4021 381, 413 1381 (D)



KRM-K-VDM-AS#101



KRM-K-VDM-AS#102

KRM CORPORATION

OHSA 18001-2007 & BS EN ISO 9001 : 2008 CERTIFIED COMPANY
to meet OSHA's Lockout Tagout Standard 29 CFR, 1910.147&1910.269

GSTIN No.: 06AAVPW8746Q1Z6,
PAN No.: AAVPW8746Q
TIN No.: 06821328889,
TAN no.: RTKKO3359G

M: 00 91 9810 291 381, 8800 544 881

Regd. Office: 1H/31-A, N.I.T, Faridabad-121001 (Haryana) Postal Office: 615, Sector-15-A, Faridabad-121007-Haryana-NCR-INDIA

www.krmcorporation.com | www.lockouttagouts.com | www.safetyloto.com | www.lockoutmaster.com | www.lotoappliances.com



to compliance
OSHA's Lockout Tagout Standard
29 CFR, 1910.147&1910.269

Email: info@krmcorporation.com, krm@krmcorporation.com, wadhwarajinder@gmail.com



www.lotoappliances.com

**KRM Safetech Private Limited**

GSTIN No.: 06AAECK2831L1ZI
PAN No.: AAECK2831L
TIN No.: 06824000112
CIN No.: u31903HR2011PTC042508

Telefax: 00 91 129 4021 381, 413 1381 (D)



KRM-K-VDM-AS#103



KRM-K-VDM-AS#104

KRM CORPORATION

OHSA 18001-2007 & BS EN ISO 9001 : 2008 CERTIFIED COMPANY
to meet OSHA'S Lockout Tagout Standard 29 CFR, 1910.147&1910.269

GSTIN No.: 06AAVPW8746Q1Z6,
PAN No.: AAVPW8746Q
TIN No.: 06821328889,
TAN no.: RTKKO3359G

M: 00 91 9810 291 381, 8800 544 881

Regd. Office: 1H/31-A, N.I.T, Faridabad-121001 (Haryana) Postal Office: 615, Sector-15-A, Faridabad-121007-Haryana-NCR-INDIA

www.krmcorporation.com | www.lockouttagouts.com | www.safetyloto.com | www.lockoutmaster.com | www.lotoappliances.com



to compliance
OSHA'S Lockout Tagout Standard
29 CFR, 1910.147&1910.269

Email: info@krmcorporation.com, krm@krmcorporation.com, wadhwrajinder@gmail.com



www.lotoappliances.com



KRM Safetech Private Limited

GSTIN No.: 06AAECK2831L1ZI
PAN No.: AAECK2831L
TIN No.: 06824000112
CIN No.: u31903HR2011PTC042508

Telefax: 00 91 129 4021 381, 413 1381 (D)



KRM-K-VDM-AS#105



KRM-K-VDM-AS#106

KRM CORPORATION

OHSA 18001-2007 & BS EN ISO 9001 : 2008 CERTIFIED COMPANY
to meet OSHA'S Lockout Tagout Standard 29 CFR, 1910.147&1910.269

GSTIN No.: 06AAVPW8746Q1Z6,
PAN No.: AAVPW8746Q
TIN No.: 06821328889,
TAN no.: RTKKO3359G

M: 00 91 9810 291 381, 8800 544 881

Regd. Office: 1H/31-A, N.I.T, Faridabad-121001 (Haryana) Postal Office: 615, Sector-15-A, Faridabad-121007-Haryana-NCR-INDIA

www.krmcorporation.com | www.lockouttagouts.com | www.safetyloto.com | www.lockoutmaster.com | www.lotoappliances.com



to compliance
OSHA'S Lockout Tagout Standard
29 CFR, 1910.147&1910.269

Email: info@krmcorporation.com, krm@krmcorporation.com, wadhwarajinder@gmail.com



www.lotoappliances.com



KRM Safetech Private Limited

GSTIN No.: 06AAECK2831L1ZI
PAN No.: AAECK2831L
TIN No.: 06824000112
CIN No.: u31903HR2011PTC042508

Telefax: 00 91 129 4021 381, 413 1381 (D)



KRM-K-VDM-AS#107



KRM-K-VDM-AS#108

KRM CORPORATION

OSHAS 18001-2007 & BS EN ISO 9001 : 2008 CERTIFIED COMPANY
to meet OSHA'S Lockout Tagout Standard 29 CFR, 1910.147&1910.269

GSTIN No.: 06AAVPW8746Q1Z6,
PAN No.: AAVPW8746Q
TIN No.: 06821328889,
TAN no.: RTKKO3359G

M: 00 91 9810 291 381, 8800 544 881

Regd. Office: 1H/31-A, N.I.T, Faridabad-121001 (Haryana) Postal Office: 615, Sector-15-A, Faridabad-121007-Haryana-NCR-INDIA

www.krmcorporation.com | www.lockouttagouts.com | www.safetyloto.com | www.lockoutmaster.com | www.lotoappliances.com



KRM-LOTO
LOCKOUT/TAGOUT
SAFETY PRODUCTS

to compliance
OSHA'S Lockout Tagout Standard
29 CFR, 1910.147&1910.269

Email: info@krmcorporation.com, krm@krmcorporation.com, wadhwarajinder@gmail.com



www.lotoappliances.com

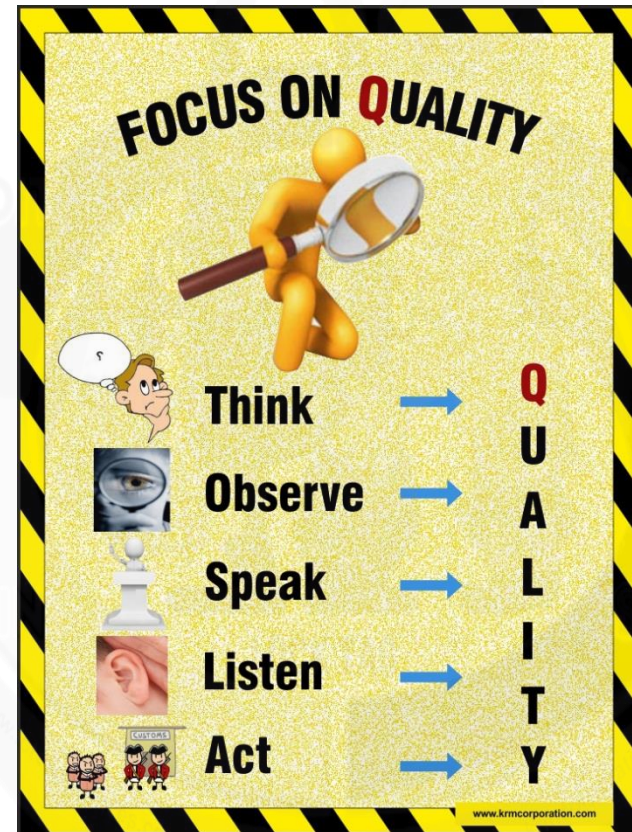
**KRM Safetech Private Limited**

GSTIN No.: 06AAECK2831L1ZI
PAN No.: AAECK2831L
TIN No.: 06824000112
CIN No.: u31903HR2011PTC042508

Telefax: 00 91 129 4021 381, 413 1381 (D)



KRM-K-VDM-AS#109



KRM-K-VDM-AS#110

KRM CORPORATION

OHSA 18001-2007 & BS EN ISO 9001 : 2008 CERTIFIED COMPANY
to meet OSHA'S Lockout Tagout Standard 29 CFR, 1910.147&1910.269

GSTIN No.: 06AAVPW8746Q1Z6,
PAN No.: AAVPW8746Q
TIN No.: 06821328889,
TAN no.: RTKKO3359G

M: 00 91 9810 291 381, 8800 544 881

Regd. Office: 1H/31-A, N.I.T, Faridabad-121001 (Haryana) Postal Office: 615, Sector-15-A, Faridabad-121007-Haryana-NCR-INDIA

www.krmcorporation.com | www.lockouttagouts.com | www.safetyloto.com | www.lockoutmaster.com | www.lotoappliances.com



to compliance
OSHA'S Lockout Tagout Standard
29 CFR, 1910.147&1910.269

Email: info@krmcorporation.com, krm@krmcorporation.com, wadhwarajinder@gmail.com



www.lotoappliances.com



KRM Safetech Private Limited

GSTIN No.: 06AAECK2831L1ZI
PAN No.: AAECK2831L
TIN No.: 06824000112
CIN No.: u31903HR2011PTC042508

Telefax: 00 91 129 4021 381, 413 1381 (D)



KRM-K-VDM-AS#111



KRM-K-VDM-AS#112

KRM CORPORATION

OHSA 18001-2007 & BS EN ISO 9001 : 2008 CERTIFIED COMPANY
to meet OSHA's Lockout Tagout Standard 29 CFR, 1910.147&1910.269

GSTIN No.: 06AAVPW8746Q1Z6,
PAN No.: AAVPW8746Q
TIN No.: 06821328889,
TAN no.: RTKKO3359G

M: 00 91 9810 291 381, 8800 544 881

Regd. Office: 1H/31-A, N.I.T, Faridabad-121001 (Haryana) Postal Office: 615, Sector-15-A, Faridabad-121007-Haryana-NCR-INDIA

www.krmcorporation.com | www.lockouttagouts.com | www.safetyloto.com | www.lockoutmaster.com | www.lotoappliances.com



to compliance
OSHA's Lockout Tagout Standard
29 CFR, 1910.147&1910.269

Email: info@krmcorporation.com, krm@krmcorporation.com, wadhwrajinder@gmail.com



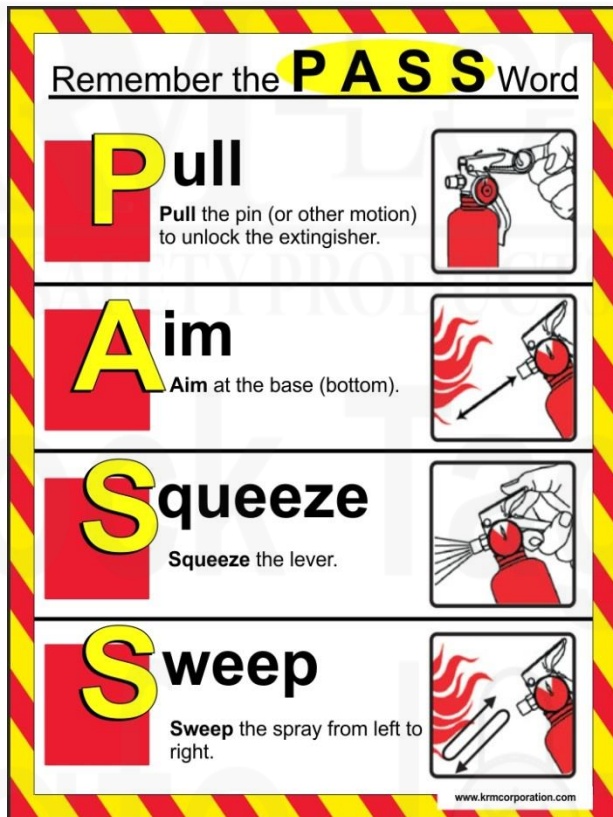
www.lotoappliances.com



KRM Safetech Private Limited

GSTIN No.: 06AAECK2831L1ZI
PAN No.: AAECK2831L
TIN No.: 06824000112
CIN No.: u31903HR2011PTC042508

Telefax: 00 91 129 4021 381, 413 1381 (D)



KRM-K-VDM-AS#113



KRM-K-VDM-AS#114

KRM CORPORATION

OHSA 18001-2007 & BS EN ISO 9001 : 2008 CERTIFIED COMPANY
to meet OSHA's Lockout Tagout Standard 29 CFR, 1910.147&1910.269

GSTIN No.: 06AAVPW8746Q1Z6,
PAN No.: AAVPW8746Q
TIN No.: 06821328889,
TAN no.: RTKKO3359G

M: 00 91 9810 291 381, 8800 544 881

Regd. Office: 1H/31-A, N.I.T, Faridabad-121001 (Haryana) Postal Office: 615, Sector-15-A, Faridabad-121007-Haryana-NCR-INDIA

www.krmcorporation.com | www.lockouttagouts.com | www.safetyloto.com | www.lockoutmaster.com | www.lotoappliances.com



to compliance
OSHA's Lockout Tagout Standard
29 CFR, 1910.147&1910.269

Email: info@krmcorporation.com, krm@krmcorporation.com, wadhwarajinder@gmail.com



www.lotoappliances.com



KRM Safetech Private Limited

GSTIN No.: 06AAECK2831L1ZI
PAN No.: AAECK2831L
TIN No.: 06824000112
CIN No.: u31903HR2011PTC042508

Telefax: 00 91 129 4021 381, 413 1381 (D)



KRM-K-VDM-AS#115



KRM-K-VDM-AS#116

KRM CORPORATION

OHSA 18001-2007 & BS EN ISO 9001 : 2008 CERTIFIED COMPANY
to meet OSHA'S Lockout Tagout Standard 29 CFR, 1910.147&1910.269

GSTIN No.: 06AAVPW8746Q1Z6,
PAN No.: AAVPW8746Q
TIN No.: 06821328889,
TAN no.: RTKKO3359G

M: 00 91 9810 291 381, 8800 544 881

Regd. Office: 1H/31-A, N.I.T, Faridabad-121001 (Haryana) Postal Office: 615, Sector-15-A, Faridabad-121007-Haryana-NCR-INDIA

www.krmcorporation.com | www.lockouttagouts.com | www.safetyloto.com | www.lockoutmaster.com | www.lotoappliances.com



to compliance
OSHA'S Lockout Tagout Standard
29 CFR, 1910.147&1910.269

Email: info@krmcorporation.com, krm@krmcorporation.com, wadhwrajinder@gmail.com



www.lotoappliances.com



KRM Safetech Private Limited

GSTIN No.: 06AAECK2831L1ZI
PAN No.: AAECK2831L
TIN No.: 06824000112
CIN No.: u31903HR2011PTC042508

Telefax: 00 91 129 4021 381, 413 1381 (D)



KRM-K-VDM-AS#117



KRM-K-VDM-AS#118

GSTIN No.: 06AAVPW8746Q1Z6,
PAN No.: AAVPW8746Q
TIN No.: 06821328889,
TAN no.: RTKKO3359G

M: 00 91 9810 291 381, 8800 544 881

Regd. Office: 1H/31-A, N.I.T, Faridabad-121001 (Haryana) Postal Office: 615, Sector-15-A, Faridabad-121007-Haryana-NCR-INDIA

www.krmcorporation.com | www.lockouttagouts.com | www.safetyloto.com | www.lockoutmaster.com | www.lotoappliances.com



to compliance
OSHA's Lockout Tagout Standard
29 CFR, 1910.147&1910.269

Email: info@krmcorporation.com, krm@krmcorporation.com, wadhwrajinder@gmail.com



www.lotoappliances.com



GSTIN No.: 06AAECK2831L1ZI
PAN No.: AAECK2831L
TIN No.: 06824000112
CIN No.: u31903HR2011PTC042508

Telefax: 00 91 129 4021 381, 413 1381 (D)



KRM-K-VDM-AS#119



KRM-K-VDM-AS#120

KRM CORPORATION

OHSA 18001-2007 & BS EN ISO 9001 : 2008 CERTIFIED COMPANY
to meet OSHA'S Lockout Tagout Standard 29 CFR, 1910.147&1910.269

GSTIN No.: 06AAVPW8746Q1Z6,
PAN No.: AAVPW8746Q
TIN No.: 06821328889,
TAN no.: RTKKO3359G

M: 00 91 9810 291 381, 8800 544 881

Regd. Office: 1H/31-A, N.I.T, Faridabad-121001 (Haryana) Postal Office: 615, Sector-15-A, Faridabad-121007-Haryana-NCR-INDIA

www.krmcorporation.com | www.lockouttagouts.com | www.safetyloto.com | www.lockoutmaster.com | www.lotoappliances.com



to compliance
OSHA'S Lockout Tagout Standard
29 CFR, 1910.147&1910.269

Email: info@krmcorporation.com, krm@krmcorporation.com, wadhwarajinder@gmail.com



www.lotoappliances.com



KRM Safetech Private Limited

GSTIN No.: 06AAECK2831L1ZI
PAN No.: AAECK2831L
TIN No.: 06824000112
CIN No.: u31903HR2011PTC042508

Telefax: 00 91 129 4021 381, 413 1381 (D)



KRM-K-VDM-AS#121



KRM-K-VDM-AS#122

GSTIN No.: 06AAVPW8746Q1Z6,
PAN No.: AAVPW8746Q
TIN No.: 06821328889,
TAN no.: RTKKO3359G

M: 00 91 9810 291 381, 8800 544 881

Regd. Office: 1H/31-A, N.I.T, Faridabad-121001 (Haryana) Postal Office: 615, Sector-15-A, Faridabad-121007-Haryana-NCR-INDIA

www.krmcorporation.com | www.lockouttagouts.com | www.safetyloto.com | www.lockoutmaster.com | www.lotoappliances.com



to compliance
OSHA's Lockout Tagout Standard
29 CFR, 1910.147&1910.269

Email: info@krmcorporation.com, krm@krmcorporation.com, wadhwrajinder@gmail.com

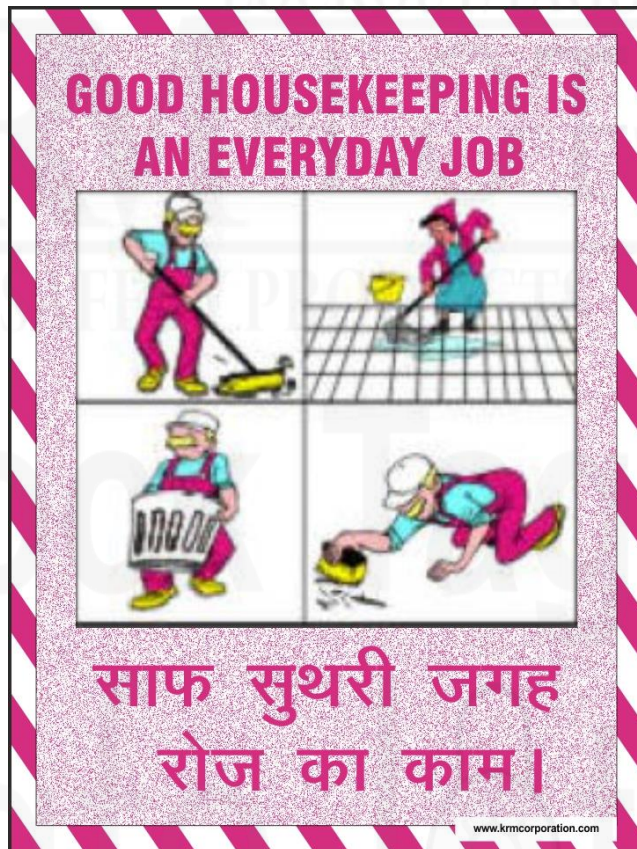


www.lotoappliances.com

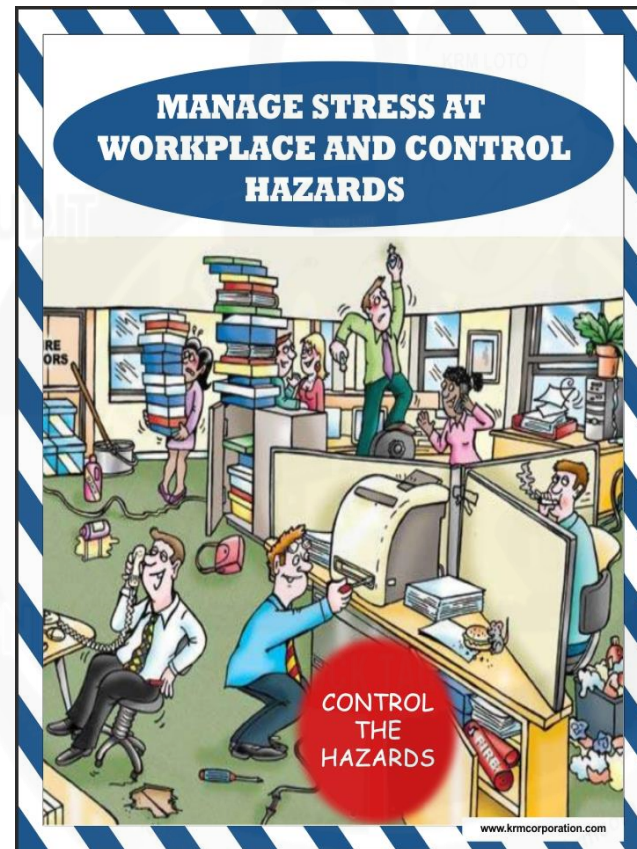


GSTIN No.: 06AAECK2831L1ZI
PAN No.: AAECK2831L
TIN No.: 06824000112
CIN No.: u31903HR2011PTC042508

Telefax: 00 91 129 4021 381, 413 1381 (D)



KRM-K-VDM-AS#123



KRM-K-VDM-AS#124

GSTIN No.: 06AAVPW8746Q1Z6,
PAN No.: AAVPW8746Q
TIN No.: 06821328889,
TAN no.: RTKKO3359G

M: 00 91 9810 291 381, 8800 544 881

Regd. Office: 1H/31-A, N.I.T, Faridabad-121001 (Haryana) Postal Office: 615, Sector-15-A, Faridabad-121007-Haryana-NCR-INDIA

www.krmcorporation.com | www.lockouttagouts.com | www.safetyloto.com | www.lockoutmaster.com | www.lotoappliances.com



to compliance
OSHA's Lockout Tagout Standard
29 CFR, 1910.147&1910.269

Email: info@krmcorporation.com, krm@krmcorporation.com, wadhwarajinder@gmail.com



www.lotoappliances.com



GSTIN No.: 06AAECK2831L1ZI
PAN No.: AAECK2831L
TIN No.: 06824000112
CIN No.: u31903HR2011PTC042508

Telefax: 00 91 129 4021 381, 413 1381 (D)



KRM-K-VDM-AS#125



KRM-K-VDM-AS#126

GSTIN No.: 06AAVPW8746Q1Z6,
PAN No.: AAVPW8746Q
TIN No.: 06821328889,
TAN no.: RTKKO3359G

M: 00 91 9810 291 381, 8800 544 881

Regd. Office: 1H/31-A, N.I.T, Faridabad-121001 (Haryana) Postal Office: 615, Sector-15-A, Faridabad-121007-Haryana-NCR-INDIA

www.krmcorporation.com | www.lockouttagouts.com | www.safetyloto.com | www.lockoutmaster.com | www.lotoappliances.com



to compliance
OSHA'S Lockout Tagout Standard
29 CFR, 1910.147&1910.269

Email: info@krmcorporation.com, krm@krmcorporation.com, wadhwarajinder@gmail.com



www.lotoappliances.com



GSTIN No.: 06AAECK2831L1ZI
PAN No.: AAECK2831L
TIN No.: 06824000112
CIN No.: u31903HR2011PTC042508

Telefax: 00 91 129 4021 381, 413 1381 (D)

KRM LOTO - Electric Shock & Its First Aid Poster

Made of multimedia pre adhesive vinyl

With transparent UV lamination

Made of thick 3 mm thick ACP sheet.

Eco friendly.

Size - 24" x 36"

Indoor and Outdoor application.

If required can make holes on the corner of the sheet to hang it.

Customization can be done for size and matter on the quantity ordered.

Weight – 5.5kg.

NOTE:- Volumetric Weight will be charged for this piece.

Prices available for a single piece.



KRM-K-VDM-AS#127

GSTIN No.: 06AAVPW8746Q1Z6,
PAN No.: AAVPW8746Q
TIN No.: 06821328889,
TAN no.: RTKKO3359G

M: 00 91 9810 291 381, 8800 544 881

Regd. Office: 1H/31-A, N.I.T, Faridabad-121001 (Haryana) Postal Office: 615, Sector-15-A, Faridabad-121007-Haryana-NCR-INDIA

www.krmcorporation.com | www.lockouttagouts.com | www.safetyloto.com | www.lockoutmaster.com | www.lotoappliances.com



KRM-LOTO
LOCKOUT/TAGOUT
SAFETY PRODUCTS

to compliance
OSHA'S Lockout Tagout Standard
29 CFR, 1910.147&1910.269

Email: info@krmcorporation.com, krm@krmcorporation.com, wadhwrajinder@gmail.com



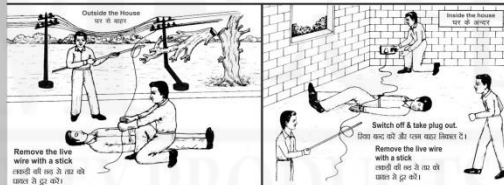
www.lotoappliances.com



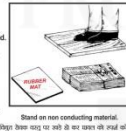
GSTIN No.: 06AAECK2831L1Z1
PAN No.: AAECK2831L
TIN No.: 06824000112
CIN No.: u31903HR2011PTC042508

Telefax: 00 91 129 4021 381, 413 1381 (D)

ELECTRIC SHOCK & TREATMENT विद्युताघात तथा उपचार



EFFECTS OF SHOCK
विद्युतधारा के प्रभाव
Respiratory muscles are paralysed.
skin may be burnt.
अगर धारा की मात्रा बहुत बड़ी हो सकती है, तब तब तक नहीं है।
TREATMENT उपचार
Loosen tight clothing, give Artificial
Respiration, treat any burns.
जो कपड़े जो धीरे धीरे खोलें और आँखों
की तरफ ध्यान दें कि जलाने से बचें।



Stand on non-conducting material.
थोड़े ठोस वस्तु पर खड़े होकर काम करें जो जल नहीं लेती।



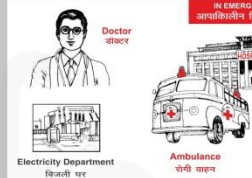
Never give an unconscious person any thing to drink.
अगर व्यक्ति को चेतना नहीं है तो कुछ भी न दें।



Apply moderate pressure to expel air
को: उसका चेहरा की ओर की ओर दबा दें।
Release pressure to take air in.
उसका अगला भाग को धीरे खोलें और खोलें।



Raise the shoulders so that the
head is tilted backwards, bring
the arms over chest and press
down on the arms.
उसके कंधों को धीरे धीरे ऊपर उठा दें
और धीरे धीरे नीचे दबा दें।
To inhale the air, hold the arms,
bring them over the head,
press them down on the arms.
जो धीरे धीरे नीचे दबा दें।



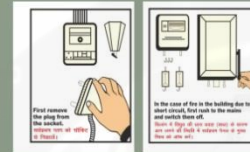
IN EMERGENCY CONTACT
आपातकालीन स्थिति में संपर्क करें
Doctor
डॉक्टर
Fire Brigade
अग्नि-समन सेवा
Electricity Department
विजली विभाग
Ambulance
सेवा वाहन
Police
पुलिस



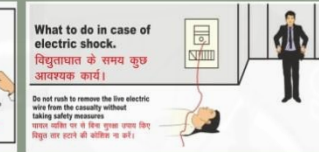
The speed with which
casualty is brought
under treatment is of
utmost importance
पात्रक को जल्दी से उपचार
प्राप्त आवश्यक है।

www.krmcorporation.com

ELECTRIC SHOCK & ITS FIRST AID विद्युताघात और उसका उपचार



Remove the live wire with a stick
खाली की तरफ से तब तक नहीं है।
Switch off & take plug out.
धारा बंद करें और प्लग खोलें।
Remove the live wire with a stick
खाली की तरफ से तब तक नहीं है।



What to do in case of electric shock.
विद्युताघात के समय कुछ आवश्यक कार्य।
Do not rush to remove the live electric wire from the casualty without taking safety measures.
जल्दी खाली की तरफ से तब तक नहीं है।
Do not think the patient is dead. Call the doctor immediately and start artificial respiration.
मरने को मानें न मानें। डॉक्टर को बुलाएं और कृत्रिम श्वास शुरू करें।



Effects of electric shock
विद्युतधारा के प्रभाव
Respiratory muscles are paralysed.
skin may be burnt.
अगर धारा की मात्रा बहुत बड़ी हो सकती है, तब तब तक नहीं है।
TREATMENT उपचार
Loosen tight clothing, give Artificial
Respiration, treat any burns.
जो कपड़े जो धीरे धीरे खोलें और आँखों
की तरफ ध्यान दें कि जलाने से बचें।



Stand on non-conducting material.
थोड़े ठोस वस्तु पर खड़े होकर काम करें जो जल नहीं लेती।



Apply moderate pressure to expel air
को: उसका चेहरा की ओर की ओर दबा दें।
Release pressure to take air in.
उसका अगला भाग को धीरे खोलें और खोलें।



Raise the shoulders so that the
head is tilted backwards, bring
the arms over chest and press
down on the arms.
उसके कंधों को धीरे धीरे ऊपर उठा दें
और धीरे धीरे नीचे दबा दें।
To inhale the air, hold the arms,
bring them over the head,
press them down on the arms.
जो धीरे धीरे नीचे दबा दें।



IN EMERGENCY CONTACT
आपातकालीन स्थिति में संपर्क करें
Doctor
डॉक्टर
Fire Brigade
अग्नि-समन सेवा
Electricity Department
विजली विभाग
Ambulance
सेवा वाहन
Police
पुलिस



The speed with which
casualty is brought
under treatment is of
utmost importance
पात्रक को जल्दी से उपचार
प्राप्त आवश्यक है।

www.krmcorporation.com

KRM-K-VDM-AS#128

KRM-K-VDM-AS#129

GSTIN No.: 06AAVPW8746Q1Z6,
PAN No.: AAVPW8746Q
TIN No.: 06821328889,
TAN no.: RTKKO3359G

M: 00 91 9810 291 381, 8800 544 881

Regd. Office: 1H/31-A, N.I.T, Faridabad-121001 (Haryana) Postal Office: 615, Sector-15-A, Faridabad-121007-Haryana-NCR-INDIA

www.krmcorporation.com

www.lockouttagouts.com

www.safetyloto.com

www.lockoutmaster.com

www.lotoappliances.com



to compliance
OSHA's Lockout Tagout Standard
29 CFR, 1910.147 & 1910.269



www.lotoappliances.com



GSTIN No.: 06AAECK2831L1Z1
PAN No.: AAECK2831L
TIN No.: 06824000112
CIN No.: u31903HR2011PTC042508

Telefax: 00 91 129 4021 381, 413 1381 (D)

ELECTRIC SHOCK & TREATMENT



विद्युत्ताघात तथा उपचार

विद्युत् के झटके से हताहत व्यक्ति का उपचार कैसे करें
महत्वपूर्ण - कृप्या पढ़ें।

तत्काल कार्रवाई

यदि विद्युत् धारा को बंद नहीं कर सकते तो सूखे,
अधालित सतह पर खड़े हो जाएँ और लकड़ी का खंडा, झाड़ू,
कुर्सी या रज्जु के उपयोग से कंजुयलिटी को विद्युत् स्रोत
से दूर हटाएँ।

तुरंत डायल करें **6400 / 8805022975** और एंबुलेंस बुलाएँ।

A रिकवरी स्थिति

यदि कंजुयलिटी सांस ले रहा हो।

प्रभावित व्यक्ति के पास जाएँ और आकलन करें। उनके एयरवेज और सांस
की जांच करें। अगर वे सांस ले रहे हो तो उन्हें रिकवरी स्थिति में रखें।

B कृत्रिम श्वसन

यदि कंजुयलिटी सांस नहीं ले रहा हो।

शिर और पीठ को घुमाकर एंव टुड्डी को उठाकर
एयरवेज (वायुमार्ग) को खोलें। मुँह की रुकावट की जांच करें।
टुड्डी से नाक को बंद करें।

गहरी सांस लें और मुँह से मुँह बंद कर सांस भरें जबतक कि कंजुयलिटी की छाती न
फूलने लगे - सामान्यतः 9.5-2 सेकेंड में यह होता है।

मुँह को हटाएँ और कंजुयलिटी को छाती को सिकुड़ने दें।

५ तक गीतें और इस क्रिया और सांस देने को प्रत्येक मिनट 20 बार की दर से दोहराएँ।

C बाहरी दिल संपीड़न

जब वहाँ कोई नाड़ी अभी भी नहीं हो।

कंजुयलिटी को सख्त समतल सतह लिटा दें।

अपने हाथ की तलहवीं को छाती के नीचले हिस्से की हड्डी पर रखें और दूसरे हाथ को
उसके ऊपर रखें।

अपने बाजू को सीधा रखते हुए छाती को 8-५ से.मी. तक प्रत्येक मिनट 200 संपीड़न
की दर से दबाएँ।

प्रत्येक 30 संपीड़न के बाद 2 कृत्रिम श्वास दें।

इस पूरे क्रिया को जारी रखें जब तक कि कोई मदद पहुँचे।

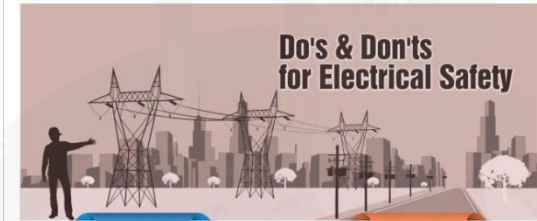
पतन की निगरानी - दिल की धड़कन फिर से बंद हो सकता है।

कंजुयलिटी को कंवल से डके और उसे अराम स्थिति में रखें।



www.krmcorporation.com

KRM-K-VDM-AS#130



Do's



Only authorized person should
enter in electrical substation



Before starting work on electrical
panel always wear Arc flash suit
and electrical hand gloves



Check the gloves for leakages by
inflating it and discard if damaged



Use potable tools with 30mA
RCCB



Always use personal lock on VCS
(Visual cutoff switch)



During welding ensure that
earthing lead is connected to the
job



In case of electric shock raise an
alarm for help and use rescue
hook to withdraw the person from
the live conductor

Don'ts



Never work on electrical equipment
without LOTO and work permit



Do not operate the VCS, when
equipment is running



Do not use Damage/unused/
unchecked portable tools



Do not use gloves after expiry date



Do not cross the arc flash protection
boundary without proper PPEs



Do not carry out welding job during
wet condition (rain or perspiration)



Do not Directly come in contact with
electrocuted person before isolating
him from the supply

Disclaimer: These covers only most common critical points, please use PPE guidelines for extensive guidelines

KRM-K-VDM-AS#131

KRM CORPORATION

OHSA 18001-2007 & BS EN ISO 9001 : 2008 CERTIFIED COMPANY
to meet OSHA'S Lockout Tagout Standard 29 CFR, 1910.147&1910.269

GSTIN No.: 06AAVPW8746Q1Z6,
PAN No.: AAVPW8746Q
TIN No.: 06821328889,
TAN no.: RTKKO3359G

M: 00 91 9810 291 381, 8800 544 881

Regd. Office: 1H/31-A, N.I.T, Faridabad-121001 (Haryana) Postal Office: 615, Sector-15-A, Faridabad-121007-Haryana-NCR-INDIA

www.krmcorporation.com



LOCKOUT/TAGOUT
KRM-LOTO
SAFETY PRODUCTS

to compliance
OSHA'S Lockout Tagout Standard
29 CFR, 1910.147&1910.269

Email: info@krmcorporation.com, krm@krmcorporation.com, wadhwrajinder@gmail.com



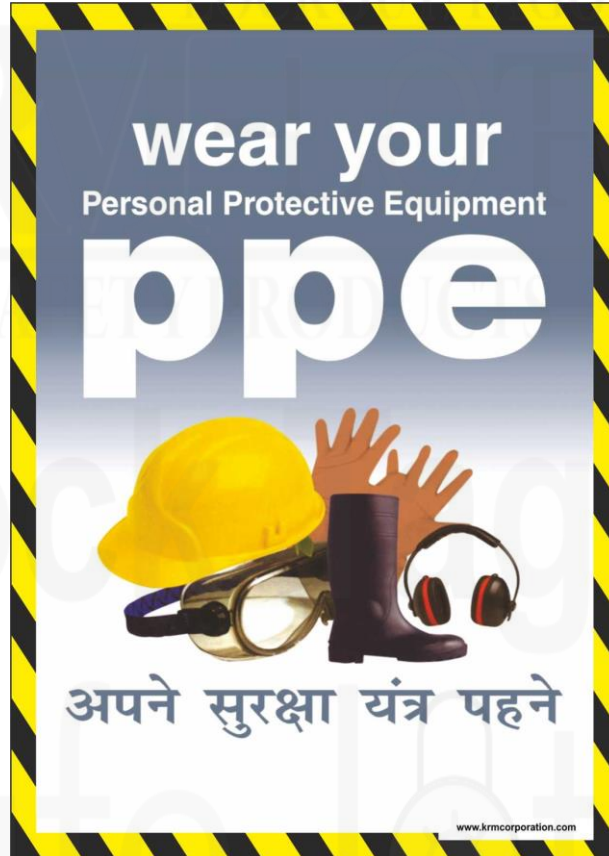
www.lotoappliances.com

**KRM Safetech Private Limited**

GSTIN No.: 06AAECK2831L1ZI
PAN No.: AAECK2831L
TIN No.: 06824000112
CIN No.: u31903HR2011PTC042508

Telefax: 00 91 129 4021 381, 413 1381 (D)

www.lockouttagouts.com | www.safetyloto.com | www.lockoutmaster.com | www.lotoappliances.com



KRM-K-VDM-AS#132

Safety is no accident

सुरक्षा का अर्थ है दुर्घटना का न होना

- Accept responsibility for your own safety
अपने बचाव की जिम्मेवारी आपकी है।
- Be aware of your legal responsibilities
अपनी कानूनी जिम्मेवारी को समझें।
- Familiarise yourself with safety procedures for relevant equipments, materials and processes
आवश्यक उपकरणों, सामानों एवं प्रणाली के सुरक्षा तौर तरीकों की जानकारी रखें।
- Ask your supervisor for training, if necessary
यदि आवश्यक हो तो अपने सुपरवाइजर्स से प्रशिक्षण की मांग करें।
- Keep workplaces clean and tidy
काम की जगह को साफ-सुथरा रखें।
- Report unsafe practices & situations
किसी भी असुरक्षित क्रिया-कलाप व परिस्थिति की रिपोर्ट करें।
- Report all breakages & faults
सभी दोष व टूट-फूट की रिपोर्ट करें।
- Report all accidents and near misses
सभी दुर्घटनाओं व संभावित दुर्घटनाओं की रिपोर्ट करें।

Workplace Safety... Do it. Do it right. Do it right now.

कार्य स्थल पर सुरक्षा... अवश्य करें, ठीक प्रकार से करें, इसी क्षण करें।

KRM-K-VDM-AS#133

KRM CORPORATIONOHSAS 18001:2007 & BS EN ISO 9001 : 2008 CERTIFIED COMPANY
to meet OSHA'S Lockout Tagout Standard 29 CFR, 1910.147&1910.269GSTIN No.: 06AAVPW8746Q1Z6,
PAN No.: AAVPW8746Q
TIN No.: 06821328889,
TAN no.: RTKKO3359G

M: 00 91 9810 291 381, 8800 544 881

Regd. Office: 1H/31-A, N.I.T, Faridabad-121001 (Haryana) Postal Office: 615, Sector-15-A, Faridabad-121007-Haryana-NCR-INDIA

www.krmcorporation.com | www.lockouttagouts.com | www.safetyloto.com | www.lockoutmaster.com | www.lotoappliances.com

to compliance
OSHA'S Lockout Tagout Standard
29 CFR, 1910.147&1910.269

www.lotoappliances.com

**KRM Safetech Private Limited**GSTIN No.: 06AAECK2831L1ZI
PAN No.: AAECK2831L
TIN No.: 06824000112
CIN No.: u31903HR2011PTC042508

Telefax: 00 91 129 4021 381, 413 1381 (D)

- Made of multimedia pre adhesive vinyl
- With transparent UV lamination
- Made of thick 3 mm thick ACP sheet.
- Eco friendly.
- Size - 6"x4 " FEET
- Indoor and Outdoor application.
- If required can make holes on the corner of the sheet to hang it.
- Customization can be done for size and matter on the quantity ordered.
- Weight – 5.5 kg.
- NOTE:- Volumetric Weight will be charged for this piece.
- Prices available are for a single piece.



KRM-K-VDM-AS#134

KRM CORPORATION

OHSA 18001-2007 & BS EN ISO 9001 : 2008 CERTIFIED COMPANY
to meet OSHA's Lockout Tagout Standard 29 CFR, 1910.147&1910.269

GSTIN No.: 06AAVPW8746Q1Z6,
PAN No.: AAVPW8746Q
TIN No.: 06821328889,
TAN no.: RTKKO3359G

M: 00 91 9810 291 381, 8800 544 881

Regd. Office: 1H/31-A, N.I.T, Faridabad-121001 (Haryana) Postal Office: 615, Sector-15-A, Faridabad-121007-Haryana-NCR-INDIA

www.krmcorporation.com | www.lockouttagouts.com | www.safetyloto.com | www.lockoutmaster.com | www.lotoappliances.com



to compliance
OSHA'S Lockout Tagout Standard
29 CFR, 1910.147&1910.269

Email: info@krmcorporation.com, krm@krmcorporation.com, wadhwarajinder@gmail.com



www.lotoappliances.com



KRM Safetech Private Limited

GSTIN No.: 06AAECK2831L1ZI
PAN No.: AAECK2831L
TIN No.: 06824000112
CIN No.: u31903HR2011PTC042508

Telefax: 00 91 129 4021 381, 413 1381 (D)



Do's



Select the lifting equipment, tools & tackles as per the suitability of load to be lift/shift



Only use tested, identified & checked lifting and shifting equipment (Marked with SWL), tools and tackles



Ensure all the safety indicators are in working condition.



Prepare the lift plan and get it checked by the competent person/Rigger



Lifting and shifting instructions are to be given by only trained and competent signal man



Check the surrounding area for any obstruction before lifting and rigging

Don'ts



Do not start the activity without barricading the lifting area



Do not remove the safety Guards on the machine without suitable permit/permission



Do not carry out the lifting operation under the live HT/LT without suitable permit. Always maintain safe distance



Never distract anybody operating the machine



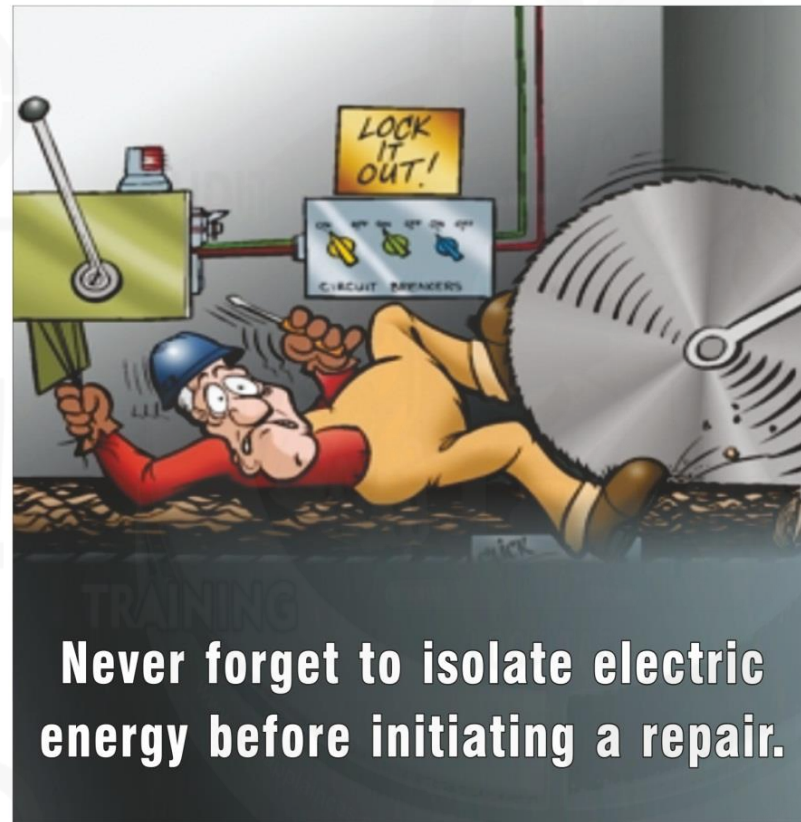
Never move below the suspended load



Never exceed the safe working load (SWL) for the machine

Disclaimer: These covers only most common critical points, please use FPE guidelines for extensive guidelines

KRM-K-VDM-AS#135



Never forget to isolate electric energy before initiating a repair.

www.krmcorporation.com

KRM-K-VDM-AS#136

GSTIN No.: 06AAVPW8746Q1Z6,
PAN No.: AAVPW8746Q
TIN No.: 06821328889,
TAN no.: RTKKO3359G

M: 00 91 9810 291 381, 8800 544 881

Regd. Office: 1H/31-A, N.I.T, Faridabad-121001 (Haryana) Postal Office: 615, Sector-15-A, Faridabad-121007-Haryana-NCR-INDIA

www.krmcorporation.com | www.lockouttagouts.com | www.safetyloto.com | www.lockoutmaster.com | www.lotoappliances.com



to compliance
OSHA'S Lockout Tagout Standard
29 CFR, 1910.147&1910.269

Email: info@krmcorporation.com, krm@krmcorporation.com, wadhwrajinder@gmail.com



www.lotoappliances.com



GSTIN No.: 06AAECK2831L1ZI
PAN No.: AAECK2831L
TIN No.: 06824000112
CIN No.: u31903HR2011PTC042508

Telefax: 00 91 129 4021 381, 413 1381 (D)

Do's and Don'ts Working at Height



Do's



Don'ts



Do as much work possible from ground

Don't start the job without Barricading the workplace



Person involved in WAH activity are Competent, Trained and Medically Fit

Do not work on Unstable and Weak Platform/Ladder/ Scaffold etc



Ensure the availability of Rescue Team, Rescue Plan and First Aider before starting the job

Don't use Untested, Unidentified and Uninspected Equipments



Select the Fall Prevention and Protection Equipment on the basis of Risk Assessment

Be careful about Overhead Electrical Wires-Don't start the work without Proper Precaution in such cases



Check the fragile Roofs, Unprotected Openings, Weather Conditions and apply control

Don't use Mobile Phone while Working on Height



Always maintain 3 Points contact on Ladders and Staircases

Don't Overload the equipments such as Scaffold, Lifeline etc



Any Edge Protection Should be Wide and Strong enough to prevent a fall

Don't Overreach on Ladders or Stepladders and Don't use them for the duration of 30 mins or more



Disclaimer: These covers only most common critical points, please use PPE guidelines for reference guidelines

www.krmcorporation.com



Do's & Don'ts Road Safety



Do's



Don'ts



Check condition of vehicle before starting a journey

Do not Drive under influence of Drugs or Alcohol



Always plan your journey

Do not drive if unfit/sleepy and not drive continuously more than 2hrs



Always Wear Seat Belt /Helmet

Do not use Cell Phones while driving



Always follow Traffic Rules of the Site/Road

Do not exceed the capacity of a Vehicle & do not entertain the passengers



Be Considerate to other Road users

Do not Engage in Road Rage



Disclaimer: These covers only most common critical points, please use PPE guidelines for reference guidelines

www.krmcorporation.com



KRM-K-VDM-AS#137

KRM-K-VDM-AS#138

KRM CORPORATION

OSHA 19001-2007 & BS EN ISO 9001 : 2008 CERTIFIED COMPANY
to meet OSHA'S Lockout Tagout Standard 29 CFR, 1910.147&1910.269

GSTIN No.: 06AAVPW8746Q1Z6,
PAN No.: AAVPW8746Q
TIN No.: 06821328889,
TAN no.: RTKKO3359G

M: 00 91 9810 291 381, 8800 544 881

Regd. Office: 1H/31-A, N.I.T, Faridabad-121001 (Haryana) Postal Office: 615, Sector-15-A, Faridabad-121007-Haryana-NCR-INDIA

www.krmcorporation.com | www.lockouttagouts.com | www.safetyloto.com | www.lockoutmaster.com | www.lotoappliances.com



to compliance
OSHA'S Lockout Tagout Standard
29 CFR, 1910.147&1910.269

Email: info@krmcorporation.com, krm@krmcorporation.com, wadhwarajinder@gmail.com



www.lotoappliances.com

**KRM Safetech Private Limited**

GSTIN No.: 06AAECK2831L1ZI
PAN No.: AAECK2831L
TIN No.: 06824000112
CIN No.: u31903HR2011PTC042508

Telefax: 00 91 129 4021 381, 413 1381 (D)

Notes:

- Lock & Tag should be used with all loto products.
- For group locking on particular energy hASp should be used.
- Group lockout box should be used for group lockout tagout.
- SciASor Cable or Round cable lockout can be used to lock multiple hazardous energies instead putting individual locks & tags.