

**KRM CORPORATION**  
OSHAS 19001:2007 & BS EN ISO 9001 : 2008 CERTIFIED COMPANY  
 to meet OSHA'S Lockout Tagout Standard 29 CFR, 1910.147&1910.269

GSTIN No.: 06AAVPW8746Q1Z6,  
 PAN No.: AAVPW8746Q  
 TIN No.: 06821328889,  
 TAN no.: RTKKO3359G

M: 00 91 9810 291 381, 8800 544 881

Regd. Office: 1H/31-A, N.I.T, Faridabad-121001 (Haryana) Postal Office: 615, Sector-15-A, Faridabad-121007-Haryana-NCR-INDIA

[www.krmcorporation.com](http://www.krmcorporation.com) | [www.lockouttagouts.com](http://www.lockouttagouts.com) | [www.safetyloto.com](http://www.safetyloto.com) | [www.lockoutmaster.com](http://www.lockoutmaster.com) | [www.lotoappliances.com](http://www.lotoappliances.com)



**LOCKOUT/TAGOUT**  
**KRM-LOTO**  
 SAFETY PRODUCTS

to compliance  
 OSHA'S Lockout Tagout Standard  
 29 CFR, 1910.147&1910.269



[www.lotoappliances.com](http://www.lotoappliances.com)



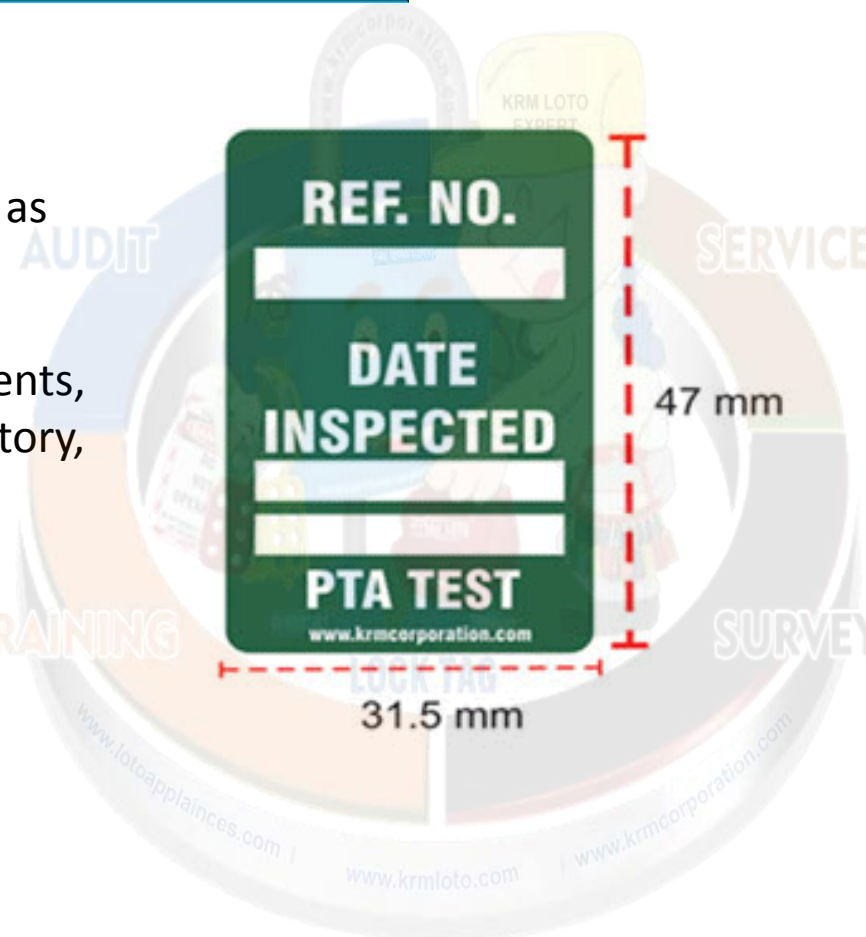
**KRM Safetech Private Limited**

GSTIN No.: 06AAECK2831L1ZI  
 PAN No.: AAECK2831L  
 TIN No.: 06824000112  
 CIN No.: u31903HR2011PTC042508

Telefax: 00 91 129 4021 381, 413 1381 (D)

**KRM LOTO - MINI SCAFFOLD TAG**

- **Material**-Rewritable plastic sheet or thick paper as per requirement
- Customized design-any text, color
- Application : fro lockout tag, tagging on equipments, instruments, joints, machines, Laboratory, inventory, material, identification, oil/gas, scaffold.
- **Size** :- 31.5mm X 47mm



**KRM CORPORATION**

OSHAS 19001:2007 & BS EN ISO 9001 : 2008 CERTIFIED COMPANY  
to meet OSHA'S Lockout Tagout Standard 29 CFR, 1910.147&1910.269

GSTIN No.: 06AAVPW8746Q1Z6,  
PAN No.: AAVPW8746Q  
TIN No.: 06821328889,  
TAN no.: RTKKO3359G

M: 00 91 9810 291 381, 8800 544 881

Regd. Office:1H/31-A, N.I.T, Faridabad-121001 (Haryana) Postal Office:615, Sector-15-A, Faridabad-121007-Haryana-NCR-INDIA

[www.krmcorporation.com](http://www.krmcorporation.com) | [www.lockouttagouts.com](http://www.lockouttagouts.com) | [www.safetyloto.com](http://www.safetyloto.com) | [www.lockoutmaster.com](http://www.lockoutmaster.com) | [www.lotoappliances.com](http://www.lotoappliances.com)



to compliance  
OSHA'S Lockout Tagout Standard  
29 CFR, 1910.147&1910.269



[www.lotoappliances.com](http://www.lotoappliances.com)



**KRM Safetech Private Limited**

GSTIN No.: 06AAECK2831L1Z1  
PAN No.: AAECK2831L  
TIN No.: 06824000112  
CIN No.: u31903HR2011PTC042508

Telefax: 00 91 129 4021 381, 413 1381 (D)

Email: [info@krmcorporation.com](mailto:info@krmcorporation.com), [krm@krmcorporation.com](mailto:krm@krmcorporation.com), [wadhwarajinder@gmail.com](mailto:wadhwarajinder@gmail.com)



**KRM-K-MIT # 10244**



**KRM-K-MIT # 10245**

**KRM CORPORATION**

OSHAS 19001:2007 & BS EN ISO 9001 : 2008 CERTIFIED COMPANY  
to meet OSHA'S Lockout Tagout Standard 29 CFR, 1910.147&1910.269

GSTIN No.: 06AAVPW8746Q1Z6,  
PAN No.: AAVPW8746Q  
TIN No.: 06821328889,  
TAN no.: RTKKO3359G

M: 00 91 9810 291 381, 8800 544 881

Regd. Office:1H/31-A, N.I.T, Faridabad-121001 (Haryana) Postal Office:615, Sector-15-A, Faridabad-121007-Haryana-NCR-INDIA

[www.krmcorporation.com](http://www.krmcorporation.com) | [www.lockouttagouts.com](http://www.lockouttagouts.com) | [www.safetyloto.com](http://www.safetyloto.com) | [www.lockoutmaster.com](http://www.lockoutmaster.com) | [www.lotoappliances.com](http://www.lotoappliances.com)



to compliance  
OSHA'S Lockout Tagout Standard  
29 CFR, 1910.147&1910.269

Email: [info@krmcorporation.com](mailto:info@krmcorporation.com), [krm@krmcorporation.com](mailto:krm@krmcorporation.com), [wadhwarajinder@gmail.com](mailto:wadhwarajinder@gmail.com)



[www.lotoappliances.com](http://www.lotoappliances.com)



**KRM Safetech Private Limited**

GSTIN No.: 06AAECK2831L1ZI  
PAN No.: AAECK2831L  
TIN No.: 06824000112  
CIN No.: u31903HR2011PTC042508

Telefax: 00 91 129 4021 381, 413 1381 (D)



**KRM-K-MIT # 10246**



**KRM-K-MIT # 10247**

**KRM CORPORATION**  
OSHAS 18001:2007 & BS EN ISO 9001 : 2008 CERTIFIED COMPANY  
 to meet OSHA'S Lockout Tagout Standard 29 CFR, 1910.147&1910.269

GSTIN No.: 06AAVPW8746Q1Z6,  
 PAN No.: AAVPW8746Q  
 TIN No.: 06821328889,  
 TAN no.: RTKKO3359G

M: 00 91 9810 291 381, 8800 544 881

Regd. Office:1H/31-A, N.I.T, Faridabad-121001 (Haryana) Postal Office:615, Sector-15-A, Faridabad-121007-Haryana-NCR-INDIA

[www.krmcorporation.com](http://www.krmcorporation.com) | [www.lockouttagouts.com](http://www.lockouttagouts.com) | [www.safetyloto.com](http://www.safetyloto.com) | [www.lockoutmaster.com](http://www.lockoutmaster.com) | [www.lotoappliances.com](http://www.lotoappliances.com)



**LOCKOUT/TAGOUT**  
**KRM-LOTO**  
 SAFETY PRODUCTS

to compliance  
 OSHA'S Lockout Tagout Standard  
 29 CFR, 1910.147&1910.269



[www.lotoappliances.com](http://www.lotoappliances.com)



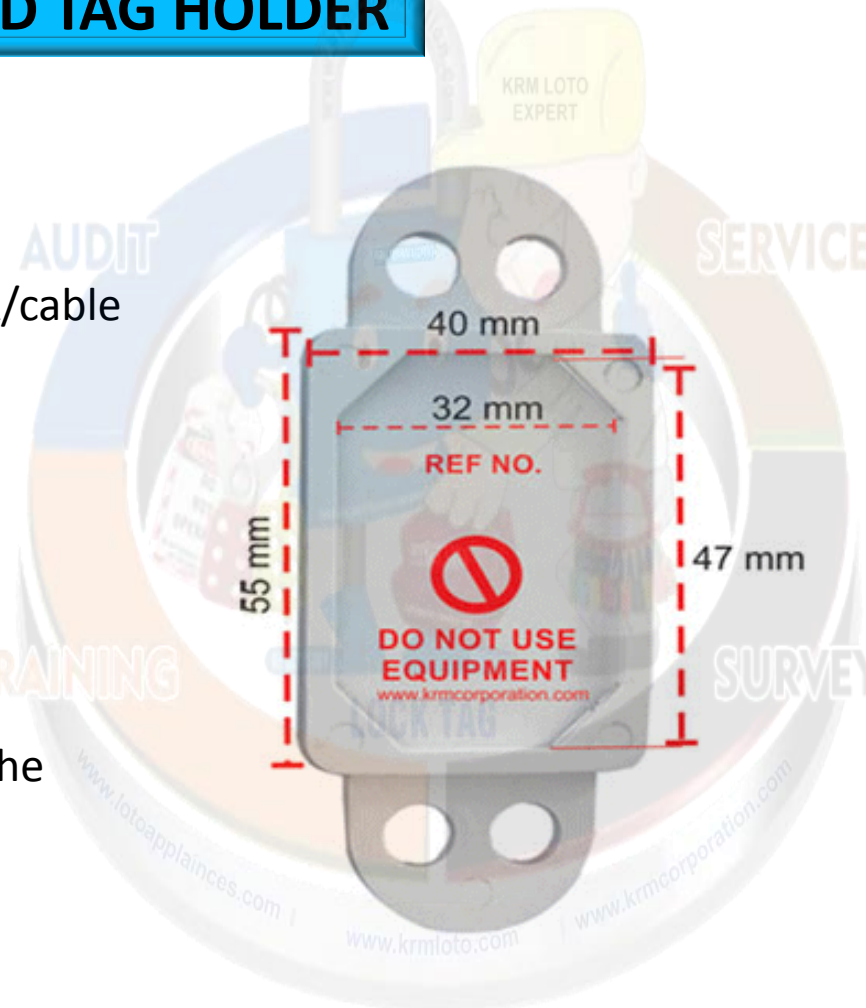
**KRM Safetech Private Limited**

GSTIN No.: 06AAECK2831L1ZI  
 PAN No.: AAECK2831L  
 TIN No.: 06824000112  
 CIN No.: u31903HR2011PTC042508

Telefax: 00 91 129 4021 381, 413 1381 (D)

## KRM LOTO - SCAFFOLD TAG HOLDER

- **Material**-ABS material in different color
- Hole diameter 8mm-can use with direct padlock/cable tie/thread/nylon tie-etc.
- It is suitable in low and high temperature area- indoor/outdoor
- Resistant to oil, grease-etc
- Customized Matter-any text, color
- **Size**- Height: 55mm, Length:40 mm
- **Weight**- 80 gm
- **Color**-White color or any color can be made as the demand



**KRM CORPORATION**  
OSHAS 19001:2007 & BS EN ISO 9001 : 2008 CERTIFIED COMPANY  
to meet OSHA'S Lockout Tagout Standard 29 CFR, 1910.147&1910.269

GSTIN No.: 06AAVPW8746Q1Z6,  
PAN No.: AAVPW8746Q  
TIN No.: 06821328889,  
TAN no.: RTKKO3359G

M: 00 91 9810 291 381, 8800 544 881

Regd. Office:1H/31-A, N.I.T, Faridabad-121001 (Haryana) Postal Office:615, Sector-15-A, Faridabad-121007-Haryana-NCR-INDIA

[www.krmcorporation.com](http://www.krmcorporation.com) | [www.lockouttagouts.com](http://www.lockouttagouts.com) | [www.safetyloto.com](http://www.safetyloto.com) | [www.lockoutmaster.com](http://www.lockoutmaster.com) | [www.lotoappliances.com](http://www.lotoappliances.com)



**LOCKOUT/TAGOUT**  
**KRM-LOTO**  
SAFETY PRODUCTS

to compliance  
OSHA'S Lockout Tagout Standard  
29 CFR, 1910.147&1910.269



[www.lotoappliances.com](http://www.lotoappliances.com)

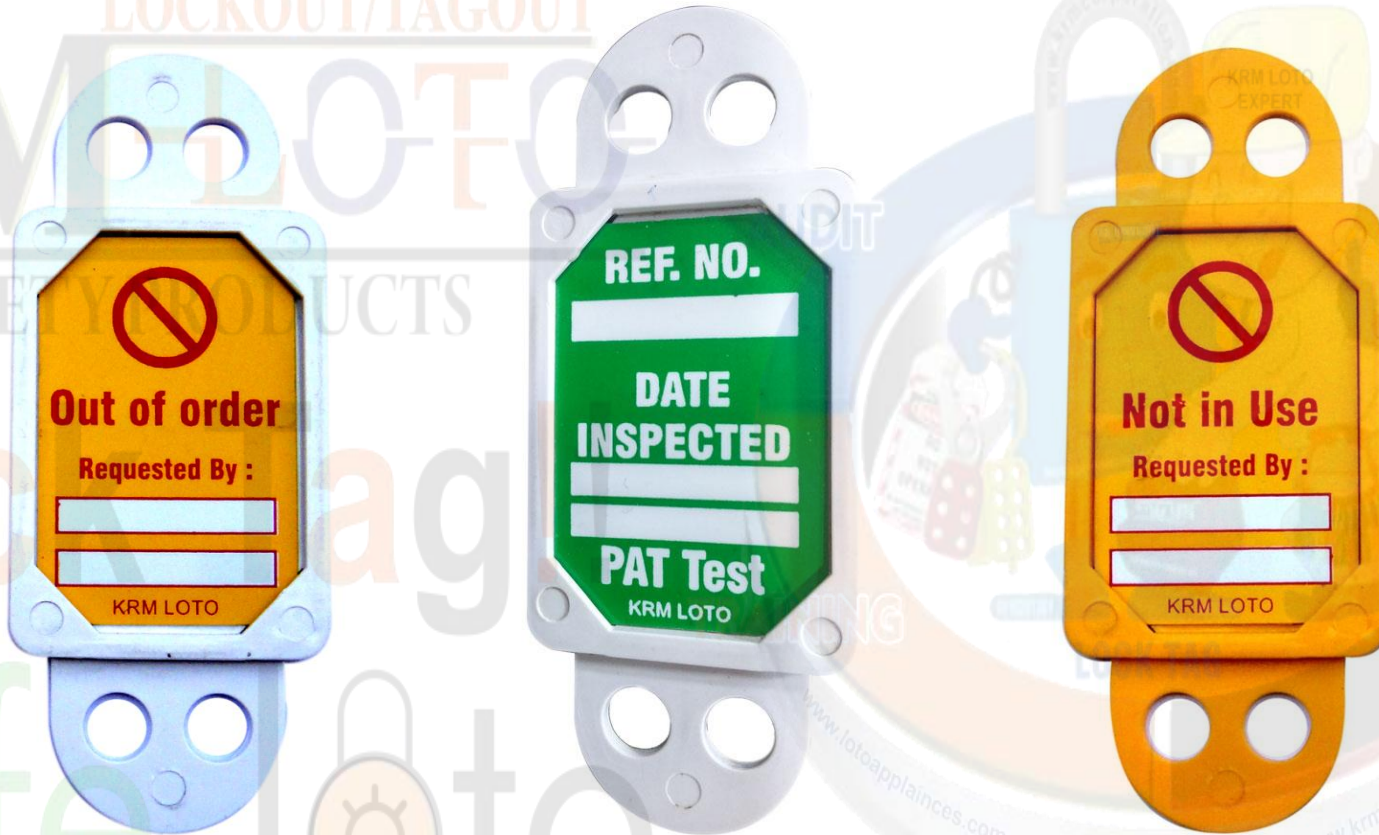


**KRM Safetech Private Limited**

GSTIN No.: 06AAECK2831L1ZI  
PAN No.: AAECK2831L  
TIN No.: 06824000112  
CIN No.: u31903HR2011PTC042508

Telefax: 00 91 129 4021 381, 413 1381 (D)

# KRM LOTO - INSTALL IMAGE SCAFFOLD TAG HOLDER



**KRM CORPORATION**

OSHAS 19001:2007 & BS EN ISO 9001 : 2008 CERTIFIED COMPANY  
to meet OSHA'S Lockout Tagout Standard 29 CFR, 1910.147&1910.269

GSTIN No.: 06AAVPW8746Q1Z6,  
PAN No.: AAVPW8746Q  
TIN No.: 06821328889,  
TAN no.: RTKKO3359G

M: 00 91 9810 291 381, 8800 544 881

Regd. Office:1H/31-A, N.I.T, Faridabad-121001 (Haryana) Postal Office:615, Sector-15-A, Faridabad-121007-Haryana-NCR-INDIA

[www.krmcorporation.com](http://www.krmcorporation.com) | [www.lockouttagouts.com](http://www.lockouttagouts.com) | [www.safetyloto.com](http://www.safetyloto.com) | [www.lockoutmaster.com](http://www.lockoutmaster.com) | [www.lotoappliances.com](http://www.lotoappliances.com)



to compliance  
OSHA'S Lockout Tagout Standard  
29 CFR, 1910.147&1910.269

Email: [info@krmcorporation.com](mailto:info@krmcorporation.com), [krm@krmcorporation.com](mailto:krm@krmcorporation.com), [wadhwarajinder@gmail.com](mailto:wadhwarajinder@gmail.com)



[www.lotoappliances.com](http://www.lotoappliances.com)



**KRM Safetech Private Limited**

GSTIN No.: 06AAECK2831L1ZI  
PAN No.: AAECK2831L  
TIN No.: 06824000112  
CIN No.: u31903HR2011PTC042508

Telefax: 00 91 129 4021 381, 413 1381 (D)



**KRM-K-MITH # 10248**



**KRM-K-MITH # 10249**

**KRM CORPORATION**

OSHA 19001-2007 & BS EN ISO 9001 : 2008 CERTIFIED COMPANY  
to meet OSHA'S Lockout Tagout Standard 29 CFR, 1910.147&1910.269

GSTIN No.: 06AAVPW8746Q1Z6,  
PAN No.: AAVPW8746Q  
TIN No.: 06821328889,  
TAN no.: RTKKO3359G

M: 00 91 9810 291 381, 8800 544 881

Regd. Office:1H/31-A, N.I.T, Faridabad-121001 (Haryana) Postal Office:615, Sector-15-A, Faridabad-121007-Haryana-NCR-INDIA

[www.krmcorporation.com](http://www.krmcorporation.com) | [www.lockouttagouts.com](http://www.lockouttagouts.com) | [www.safetyloto.com](http://www.safetyloto.com) | [www.lockoutmaster.com](http://www.lockoutmaster.com) | [www.lotoappliances.com](http://www.lotoappliances.com)



to compliance  
OSHA'S Lockout Tagout Standard  
29 CFR, 1910.147&1910.269



[www.lotoappliances.com](http://www.lotoappliances.com)



**KRM Safetech Private Limited**

GSTIN No.: 06AAECK2831L1ZI  
PAN No.: AAECK2831L  
TIN No.: 06824000112  
CIN No.: u31903HR2011PTC042508

Telefax: 00 91 129 4021 381, 413 1381 (D)



**KRM-K-MITH # 10250**



**KRM-K-MITH # 10251**



**KRM-K-MITH # 10252**